

CELLAVISION

RAL Diagnostics

Your guide to staining

PRODUCT CATALOG

Our Mission

**To advance laboratory
workflow and diagnostic
certainty through
intelligent microscopy.**



TABLE OF CONTENTS

1 | ABOUT US

A century of innovation in the service of diagnostics	7
Innovative staining solutions	7
Commitment to quality, environment and regulatory compliance	8
Industrial expertise and controlled safety	9

2 | HEMATOLOGY

MCDh™ staining	11
May-Grünwald Giemsa staining	12
Rapid variations in Romanowsky staining	13
Wright staining	14
Wright-Giemsa staining	15
Buffers	16
Specific stainings in hematology	17

3 | BACTERIOLOGY

Dilution and decontamination of samples for the diagnosis of mycobacteria	22
Gram-Nicolle staining	23
Gram-Hucker staining	24
Other stainings in bacteriology	25
Mycobacterial stainings	26
Hot staining	27
Fast cold staining	28
Cold staining	29

4 | PARASITOLOGY - MYCOLOGY

Rapid staining of tissue and blood parasites in human and veterinary biology	32
Giemsa staining in parasitology and mycology	33
Mycology	34

5 | CYTOLOGY

Hormonal cytology	36
Differentiation sperm to determinate vitality rates	37
Other staining in cytology	38

6 | HISTOLOGY

Common histological stains - Eosin and variants	41
Fast histological staining	42
Standard histological and histochemical staining	43
Perls staining for the detection of hemosiderin	44
P.A.S staining for the detection of carbohydrates	45
Specific products in histology	46
Other products for various application	48

7 | DOCUMENTARY PLATFORM

MyRALdiagnostics	
What are the benefits?	50
How to subscribe?	51

CELLAVISION
RAL Diagnostics



A century of innovation in the service of diagnostics

Founded in **1916** by two colleagues of **Louis Pasteur, Pr. Roux** and **Pr. Legroux**, alongside **Mr. Agulhon**, director of Kuhlman Industries, RAL Diagnostics has its roots in **French scientific history**.

In **1960**, RAL Diagnostics joined the **Rhône-Poulenc group** (now Aventis) as part of its healthcare division before becoming independent in 1996. It then set up its production facilities in Martillac, in southwestern France, where it manufactures a wide range of dyes and reagents for medical and industrial use.

For over a century, RAL Diagnostics has been manufacturing high-quality organic dyes, cementing its **leadership position in the French market**. In 2011, it diversified its offering by launching its **own range of staining instruments**, suitable for healthcare facilities and laboratories of all sizes.

In 2019, RAL Diagnostics joined the Swedish group **CellaVision**, the global leader in digital solutions for medical microscopy in hematology, and became **CellaVision - RAL Diagnostics**. This alliance strengthens the company's position as a global player in diagnostics.

Innovative staining solutions for medical and industrial diagnostics

CellaVision - RAL Diagnostics develops and manufactures dyes that enable the **identification of the morphology of cells, tissues, bacteria, and parasites**, which are essential for the diagnosis of many human and animal diseases.

We also offer a range of specialized **dyes for industrial use**.

A **key player in the fight against tuberculosis and malaria**, CellaVision - RAL Diagnostics has developed a range of products that **comply with the guidelines of the WHO** (World Health Organization) **and the UICTMR** (International Union Against Tuberculosis and Lung Disease).

In **2010**, CellaVision - RAL Diagnostics launched **MCDh, the first methanol-free, high-definition biological stain for hematology, specifically developed for digital image analysis**. A patent has been filed for this high-tech product.

Since 2011, CellaVision - RAL Diagnostics has been offering a more comprehensive solution for in vitro diagnostics.

With the launch of its Instruments business, CellaVision - RAL Diagnostics aims to:

- **Automate and standardize the staining process for a productive workflow,**
- **Optimize the performance of medical laboratories seeking qualitative diagnosis,**
- **Improve the safety of our users.**

Commitment to quality, environment and regulatory compliance

Most of our products are **CE marked** and comply with the requirements of numerous local regulations (USA, China, Russia, Saudi Arabia, etc.). The quality and environment management system of CellaVision - RAL Diagnostics is **certified by the LNE** for the design, manufacture, and marketing of specialized chemicals, staining reagents, and medical analysis instruments in accordance with the following standards:

- **NF EN ISO 14001: 2015,**
- **NF EN ISO 9001: 2015 (LNE),**
- **NF EN ISO 9001: 2015 (G-MED),**
- **ISO 13485: 2016 regulatory requirements applicable to medical devices.**
- **ISO 14001: 2025 (LNE)**

CellaVision - RAL Diagnostics has been ISO **9001** certified since December 2000 and ISO **13485** certified since March 2010. U.S. FDA: The CellaVision - RAL Diagnostics manufacturing facility is registered with the FDA.



These certifications attest to our compliance with legal and regulatory requirements, guaranteeing our customers high-quality products.

For the second year in a row, CellaVision - RAL Diagnostics has been awarded the EcoVadis Bronze Medal with an improved overall score, recognizing the strength and consistency of its corporate social responsibility commitments.

This recognition is based on a thorough assessment of our practices across four key areas: Environment, Labor & Human Rights, Ethics, and Sustainable Procurement, and reflects our ongoing commitment to continuous improvement and sustainable progress.



Industrial expertise and controlled safety

With more than 4,000 m² of fully equipped production space spread across four buildings, CellaVision - RAL Diagnostics manufactures more than **1.2 million liters of dedicated reagents each year.**

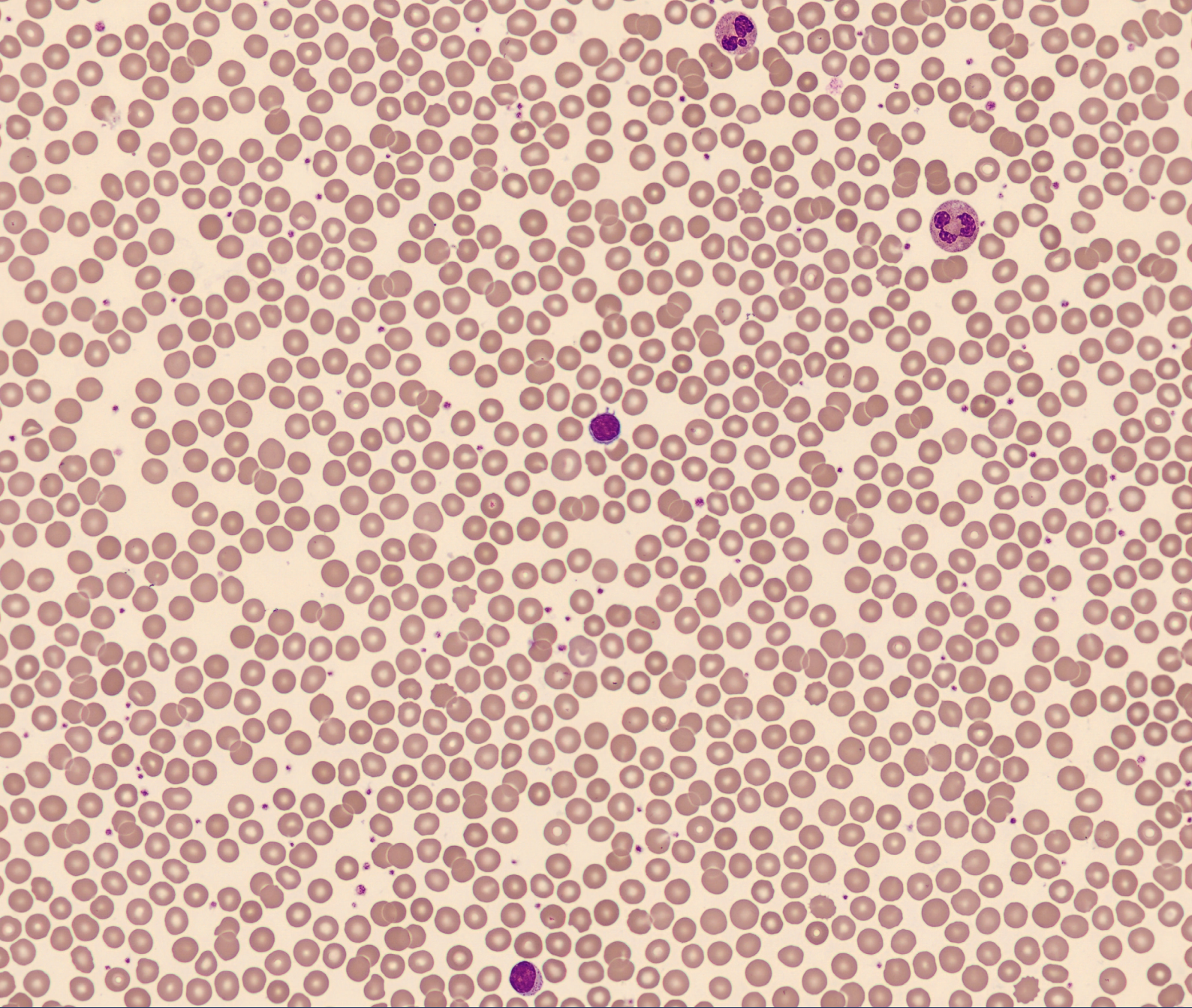
We synthesize **5 strategic powders** and produce **107 different solutions**, using stainless steel or plastic tanks, and enameled glass reactors. Our automated and semi-automated packaging lines are equipped with high-performance filtration systems tailored to each type of product.

Thanks to **constant investment** and a high level of expertise, we have developed genuine know-how in the manufacture of reagents in environments with high safety requirements, both for personnel and infrastructure.

We also specialize in the **preparation and shipment of flammable and hazardous products worldwide**, in compliance with international regulations.

To strengthen our industrial capabilities, we recently installed a **second 7-ton reactor**, enabling a **closed-loop manufacturing process**. This technological duplication ensures optimal safety for operators and increased robustness for our facilities.

CellaVision - RAL Diagnostics continues its industrial development with **innovative production tools** to provide long-term support to medical diagnostics professionals.



2 | HEMATOLOGY

Our hematology range has been designed for staining blood and bone marrow smears. It is suitable for both manual and automated staining methods, regardless of the size of the laboratory. It offers Romanowsky-type “gold” standards such as May-Grünwald Giemsa, Wright, and Wright-Giemsa stains, as well as innovative solutions such as MCDh™ staining, which combines quality, reproducibility, speed of technique, and user safety.

MCDh™ staining

Romanowsky staining without methanol for blood smears



Optimization for digital morphology



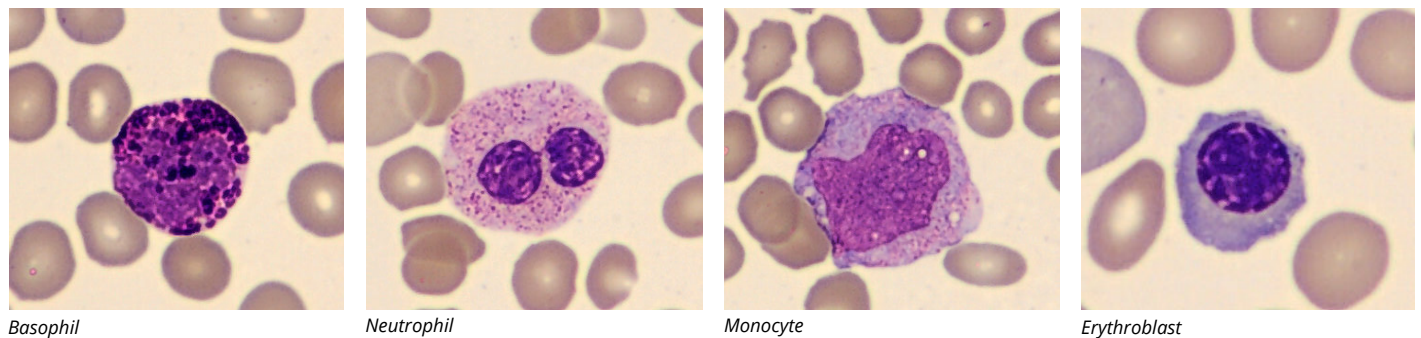
Improving laboratory safety



Result standardization

MCDh™ staining is a new generation of stains, formulated without methanol and designed for digital image analysis. This set of 4 ready-to-use reagents simplifies the staining steps. It guarantees a fast and standardized staining method while working in a much safer laboratory environment.

MCDh staining with RAL Stainbox of blood smear, analysis DC1 automate.



Basophil

Neutrophil

Monocyte

Erythroblast



MCDh1, MCDh2, MCDh3, MCDh4

Product	Reference	Packaging	Protocol duration
MCDh 1	313590-2500	2500 mL	9 min 32 sec*
MCDh 2	313570-2500	2500 mL	
MCDh 3	313560-2500	2500 mL	
MCDh 4	313600-2500	2500 mL	

*From 9 min 32 sec to 11 min 30 sec according to protocol

May-Grünwald Giemsa staining



Romanowsky staining for blood and bone marrow smears



Contrast optimization for morphological reading

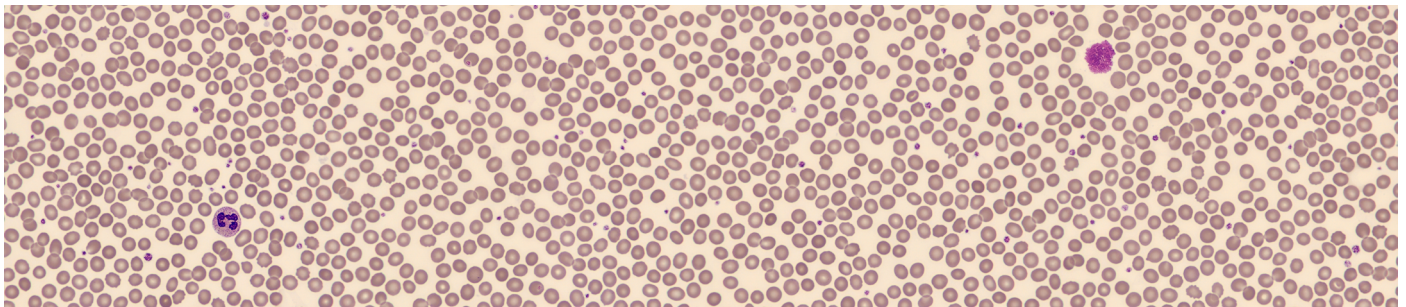


Staining quality standardization



Reduced reagent consumption

May-Grünwald Giemsa (MGG) staining is a Romanowsky-type stain that highlights blood and bone marrow cells. It combines two dyes: May-Grünwald and Giemsa.



MGG manual staining of blood smear from a patient with CLL

It is strongly recommended to use a pH buffer solution during staining to avoid unpredictable and uncontrollable variations in coloration and ensure perfect reproducibility.



May-Grünwald Solution

Giemsa R Solution

Product	Reference	Packaging	Protocol duration
May-Grünwald Solution	320070-1000	1000 mL	14 min 10 sec*
	320070-2500	2500 mL	
Giemsa R Solution	320310-1000	1000 mL	
Buffer solution pH=7.0	330370-5000	5000 mL	
Or buffer solution pH=6.8	330368-5000	5000 mL	

*From 14 min 10 sec to 1h 05 min according to protocol

Rapid variations in Romanowsky staining



Kit RAL 555 - Rapid staining Variation of May-Grünwald Giemsa

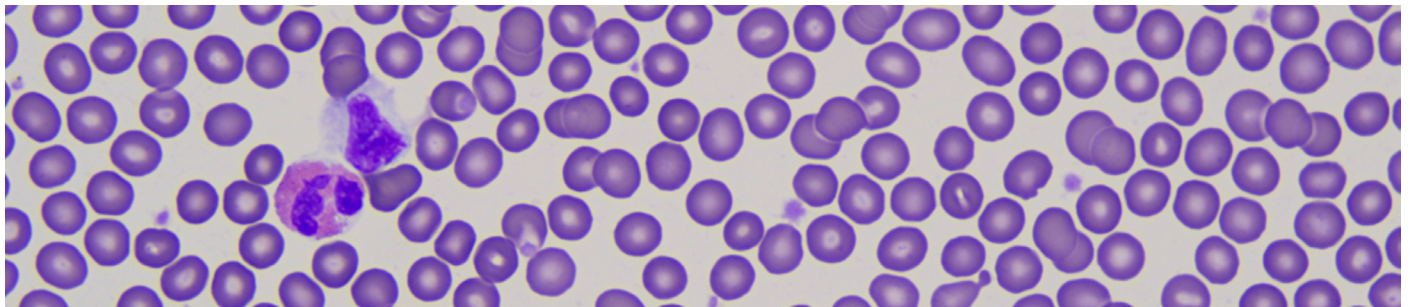


**Time-efficient
procedure**



**Guaranteed
reproducibility**

The RAL 555 kit is a rapid variant of Romanowsky staining. It is a versatile stain that can be used in hematology (bone marrow and blood smears), parasitology, histology, sperm analysis, and cytobacteriology.



RAL 555 staining of blood smear



Kit RAL 555

Product	Reference	Packaging	Protocol duration
Kit RAL 555	361550-0000	1 kit (3 x 100 mL)	15 sec

Estimated number of tests.....100 to 200 slides

Kit components			
FIX-RAL 555	362870-0100	100 mL	
Eosin-RAL 555	361640-0100	100 mL	
Blue-RAL 555	361650-0100	100 mL	

Wright staining

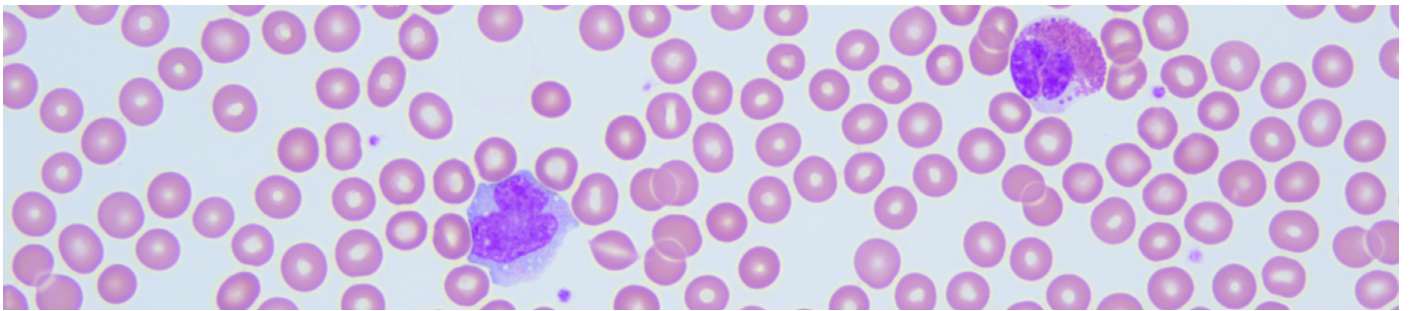


Cytological evaluation of bone marrow and blood smears



**Result
standardization**

Wright staining is a variant of Romanowsky staining, widely used in Anglo-Saxon countries. This solution is intended for use in the fixation and differential staining of cellular structures prior to microscopic examination.



Wright staining of blood smear (Obj. x50)



Wright Solution

Product	Reference	Packaging	Duration of the protocol
Wright Solution	320400-2500	2500 mL	10 min

Wright-Giemsa staining

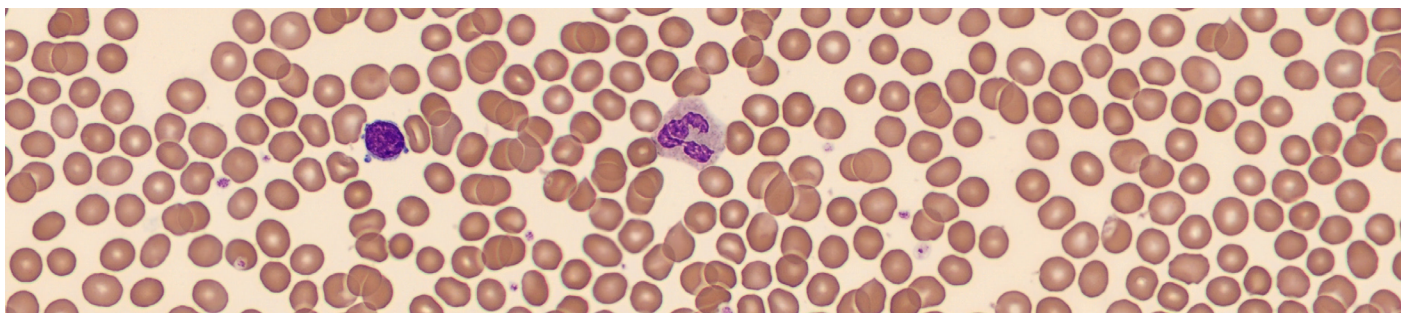


Cytological evaluation of bone marrow and blood smears



**Result
standardization**

Wright-Giemsa stain is a variant of Romanowsky stain and combines the properties of Wright's and Giemsa's solutions into a single bottle. This solution is intended for use in fixing and differential staining of cell structures prior to microscopic examination.



Wright-Giemsa staining of blood smear, analysis with CellaVision® DC-1



Wright-Giemsa
stain RAL

Product	Reference	Packaging	Duration of the protocol
Wright-Giemsa stain RAL	330211-2500	2500 mL	9 min 30 sec

Buffers

The essential role of buffers in staining for medical diagnosis

Many biological reactions can only occur under specific pH conditions. Buffer solutions therefore play a **fundamental role in maintaining a stable pH**, which is essential for chemical or biological reactions to proceed smoothly.

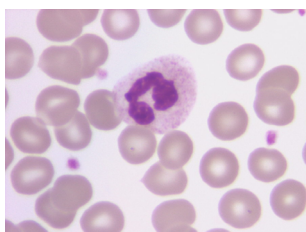
In the context of stains used in medical diagnostics, pH directly influences the affinity of dyes for cellular structures. The use of buffer solutions, in combination with staining reagents, thus allows for **optimal differentiation of the structures** to be observed before analysis under a microscope.

In hematology, dyes such as May-Grünwald and Giemsa, are neutral mixtures that are ineffective in an alcoholic medium. Their targeted action only occurs in the presence of a buffered aqueous solution, which is essential for effective differential staining of blood cells.

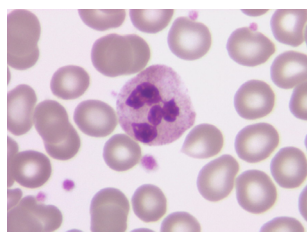
Hematology buffers are used at various stages of the protocol, particularly for dye dilution and during rinsing. Formulated with phosphates, our buffer solutions for hematology are specially designed to ensure optimal dye stability, excellent rinsability, and safe use.

These buffer solutions are essential for ensuring consistent staining quality and perfect reproducibility of results.

To avoid any unpredictable variations in color rendering, the use of a pH-adjusted buffer is strongly recommended.



MGG staining
with pH=6.8 buffer solution



MGG staining
with pH=7.0 buffer solution



pH=6.8 buffer

pH=7.0 buffer

Product	Reference	Packaging
pH = 6.8 buffer solution for Hematology	330368-5000	5000 mL
pH = 7.0 buffer solution for Hematology	330370-5000	5000 mL

Specific stainings in hematology



Kit Myeloperoxidase, staining kit with alphanaphthol-pyronine



**Result
standardization**



**Improving laboratory
safety**



**Time-efficient
procedure**

The detection of myeloperoxidase activity is a **cytochemical test** used to distinguish acute myeloid leukemia (AML) from acute lymphoblastic leukemia (ALL). The test involves detecting peroxidase activity, which is only present in cells of the myeloid lineage.



Kit RAL Myeloperoxidase staining of peripheral blood smear from a patient with LAM1



Kit Myeloperoxidase

Product	Reference	Packaging	Protocol duration
Kit Myeloperoxidase	361610-0000	1 kit	10 min
Estimated number of tests.....			30 slides
Kit components			
Alphanaphthol solution	320750-0030	30 mL	
Formalin / Ethanol solution	310850-0125	125 mL	
Mayer haematoxylin	361620-0125	125 mL	
Pyronin, 0.2% in aqueous solution	361800-0125	125 mL	
Hydrogen peroxide 3%	300980-0010	10 mL	

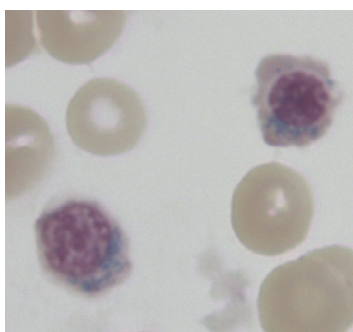
Kit HemaPerls and Kit HistoPerls, Perls staining for the detection of hemosiderin, a pathological pigment (ferric salts-Prussian blue)



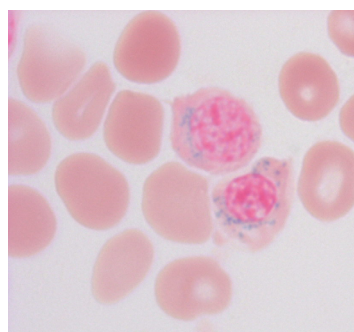
**Result
standardization**

**Guaranteed
reproducibility**

The HemaPerls and HistoPerls kits are used to detect the presence of a pathological pigment called hemosiderin. This pigment is found in the liver and bone marrow in diseases such as hemochromatosis, cirrhosis, and certain types of anemia.



Staining using the Kit HemaPerls



Staining using the Kit HistoPerls



Kit HemaPerls



Kit HistoPerls

Product	Reference	Pack.	Protocol duration
Kit HemaPerls	362800-0000	1 kit	39 min
Estimated number of tests.....			50 slides
Kit components			
Mayer Hematoxylin	361620-0100	100 mL	
Acid buffer and potassium ferrocyanide	361955-0005	10 x 5 mL	
Kit HistoPerls	361850-0000	1 kit	40 min
Estimated number of tests.....			50 slides
Kit components			
Nuclear red solution	320910-0100	100 mL	
Acid buffer and potassium ferrocyanide	361955-0005	10 x 5 mL	

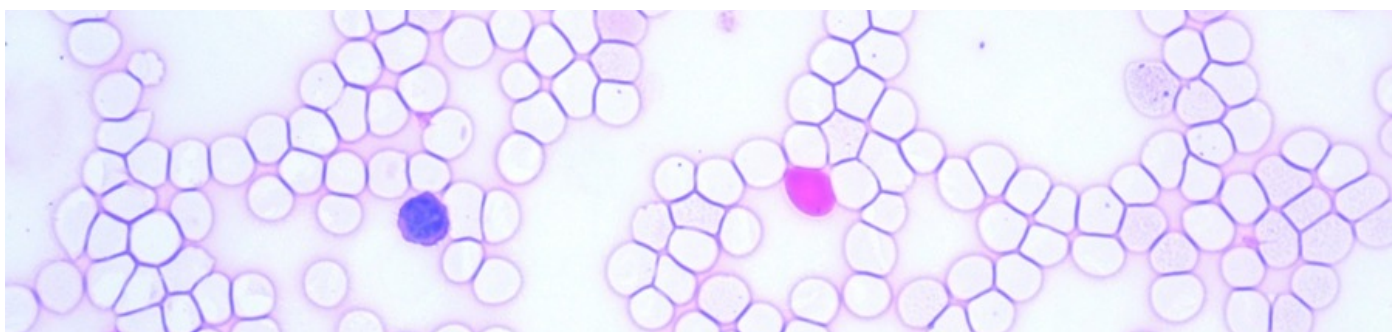
**Kit RAL Kleihauer-Betke,
Fixation and differential staining for the detection of fetal red blood cells**



**Result
standardization**

**Improving
laboratory safety**

The RAL Kleihauer-Betke staining kit is used in fixation and differential staining for the detection of fetal red blood cells in maternal blood prior to microscopic examination.



RAL Kleihauer-Betke manual staining of blood smear from a patient with fetal red blood cells (Obj. x40)

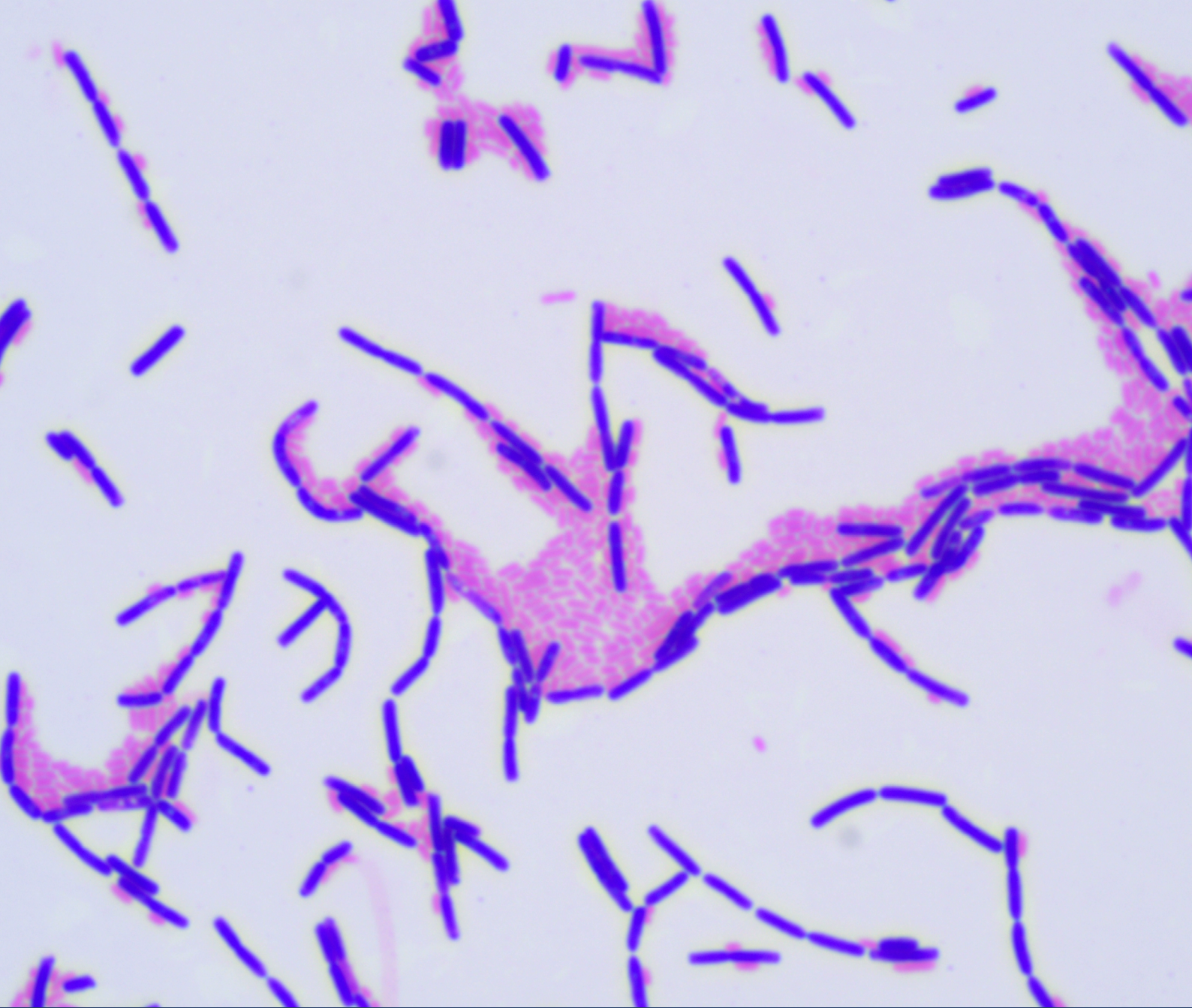
Product	Reference	Pack.	Protocol duration
Kit RAL Kleihauer-Betke	361000-0000	1 kit	13 min
Estimated number of tests.....			500 slides
Kit components			
RAL Kleihauer-Betke Fixative	313000-1000	1000 mL	
RAL Kleihauer-Betke Eluting Solution	313010-1000	1000 mL	
RAL Kleihauer-Betke Stain	313030-1000	1000 mL	
RAL Kleihauer-Betke Counterstain	313020-1000	1000 mL	



Kit RAL Kleihauer-Betke

Bottles and powders sold individually

Product	Reference	Packaging
Eosin RAL 555	361640-1000	1000 mL
Eosin RAL 555	361640-2500	2500 mL
Blue RAL 555	361650-1000	1000 mL
Blue RAL 555	361650-2500	2500 mL
Fix-RAL 555	362870-1000	1000 mL
Fix-RAL 555	362870-2500	2500 mL
Brilliant Cresyl Blue	310750-0125	125 mL
Technical Methylene Blue	363130-9025	25 Kg
Eosin Y	312710-9025	25 Kg



3 | BACTERIOLOGY

Our Bacteriology range uses different stains to ensure a reliable diagnosis.

Always attentive to your needs and sensitive to user safety, we offer a range of suitable and specific reagents that guarantee a quick and easy technique with high-quality results.

Digestion and decontamination of samples for the research of mycobacteria



Kit RAL TB Prep™

Result standardization

Simplified and optimized protocol

RAL TB Prep™ is a sample preparation kit for detecting mycobacteria, particularly those responsible for tuberculosis. This kit is designed to facilitate routine sample preparation techniques while ensuring reliable results.



Sample digestion & decontamination step from the Kit RAL TB Prep™



Kit RAL TB Prep™

Product	Reference	Packaging	Protocol duration
Kit RAL TB Prep™	360000-0000	1 kit	40 min

Estimated number of tests.....25

Kit components			
TB Prep Solution	360021-0125	2 x 125 mL	
TB Prep NALC	300012-0040	25 x 40 mg	
TB Prep Buffer	360010-0050	25 x 50 mL	

Gram staining: differentiating between Gram-positive and Gram-negative bacteria

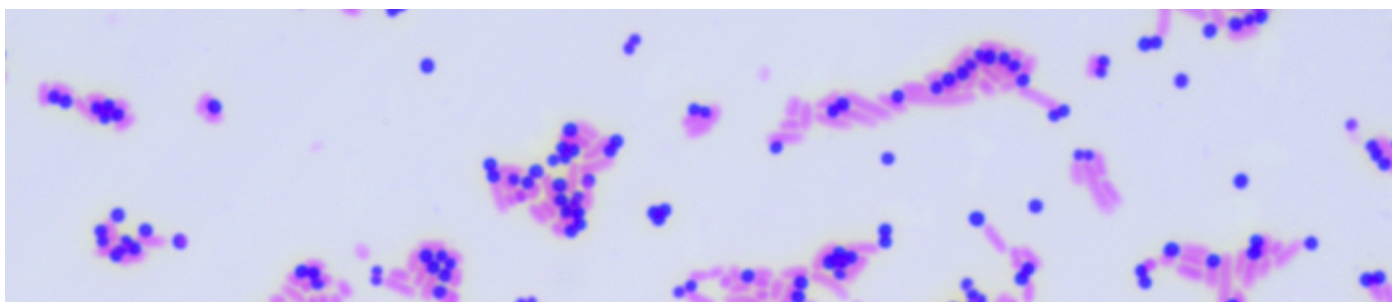


Gram-Nicolle staining

Result standardization

Time-efficient procedure

Gram-Nicolle staining is used for the differential staining of bacteria prior to microscopic examination. It is based on the different bacterial cell wall structures of Gram-positive and Gram-negative bacteria.



Gram-Nicolle staining of polybacterial culture with *S. aureus* and *E. coli* bacteria.

Product	Reference	Packaging	Protocol duration
Kit Gram-Nicolle	364320-0000	1 kit (4 x 240 mL)	2 min 32 sec

Estimated number of tests.....Up to 300 slides

Kit components

Carbolic gentian violet	364210-0240	240 mL
Lugol, PVP-stabilized solution	364550-0240	240 mL
Fast differentiator (alcohol / acetone)	361510-0240	240 mL
Ziehl carbolic fuchsin	364540-0240	240 mL



Kit Gram-Nicolle

Gram staining: differentiating Gram-positive bacteria from Gram-negative bacteria

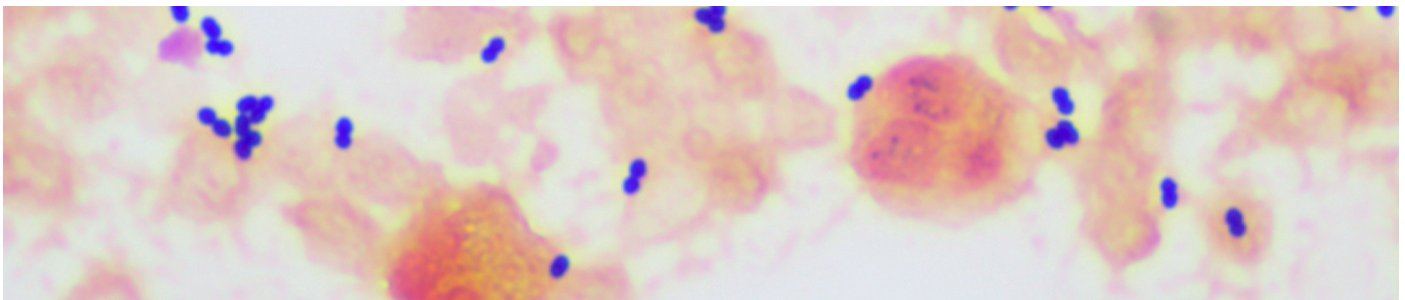


Gram-Hücker staining

Result standardization

Guaranteed reproducibility

Gram-Hücker staining is based on the same principle as Gram-Nicolle staining. Here, Gentian Violet is replaced by Oxalate Crystal Violet and Ziehl's Fuchsin by Safranin, giving Gram-negative bacteria and cellular components an orange color.



Gram-Hücker staining of a positive blood culture



Kit Gram-Hücker R



Kit Gram-Hücker L

Product	Reference	Packaging	Protocol duration
Kit Gram-Hücker R, fast action	361520-0000	1 kit (4 x 240 mL)	2 min 32 sec
Estimated number of tests.....			230 to 300 slides
Kit components			
Crystal violet oxalate*	361490-0240	240 mL	
Lugol, PVP-stabilized solution	367400-0240	240 mL	
Fast differentiator (alcohol / acetone)	361510-0240	240 mL	
Safranin	361500-0240	240 mL	
Kit Gram-Hücker L, slow action	362860-0000	1 kit (4 x 240 mL)	2 min 50 sec
Estimated number of tests.....			230 to 300 slides
Crystal violet oxalate*	361490-0240	240 mL	
Lugol, PVP-stabilized solution	367400-0240	240 mL	
Slow differentiator (alcohol based)	363030-0240	240 mL	
Safranin	361500-0240	240 mL	

*From 2 min 32 sec to 2 min 50 sec according to protocol

Other stainings in bacteriology



Kit RAL 555 - Rapid variation of May-Grünwald Giemsa staining

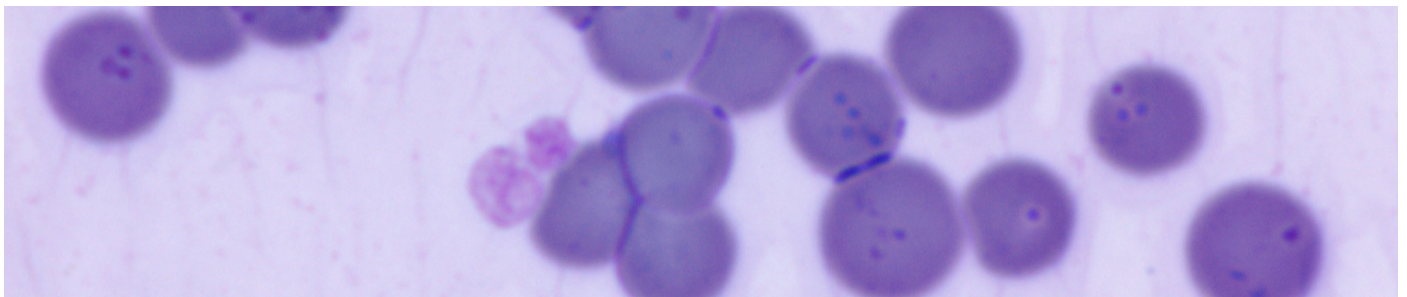


**Result
standardization**



**Time-efficient
procedure**

The RAL 555 kit is a rapid variant of Romanowsky staining. It is a versatile stain that can be used in hematology (bone marrow and blood smears), parasitology, histology, sperm analysis, and cytbacteriology.



RAL 555 staining of a blood smear from a cat with hemobartonellosis



Kit RAL 555

Product	Reference	Packaging	Protocol duration
Kit RAL 555	361550-0000	1 kit (3 x 100 mL)	22 sec (<i>Helicobacter pylori</i>)
Estimated number of tests.....			up to 200 slides
Kit components			
Fix-RAL 555	362870-0100	100 mL	
Eosin-RAL 555	361640-0100	100 mL	
Blue-RAL 555	361650-0100	100 mL	

Mycobacterial staining



Kit Fluo-RAL - Fluorescence staining

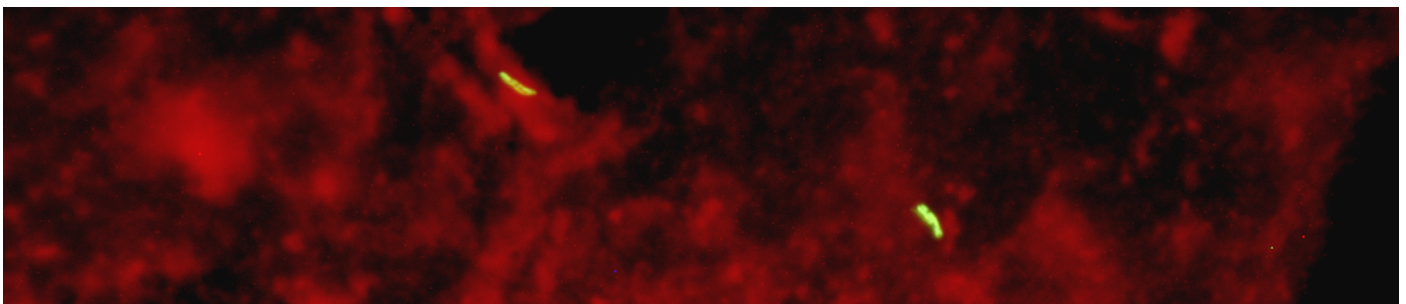


Time-efficient procedure & result



Improving laboratory safety

The Fluo-RAL kit is a three-step staining technique that uses fluorescence to quickly detect mycobacteria in a sample.



Highlighting of mycobacteria using the Kit Fluo-RAL (Obj. x50)



Kit Fluo RAL

Product	Reference	Packaging	Protocol duration
Kit Fluo-RAL	359000-0000	1 kit (2 x 250 mL + 4 x 125 mL)	4 min 30 sec*
Estimated number of tests			150 to 200 slides
Kit components			
Fluo-RAL fixative	362115-0250	250 mL	
Auramine Fluo-RAL	362325-0125	125 mL	
Phenic solution for Fluo-RAL Auramine	362530-0125	125 mL	
Fluorescent RAL Degommier discoloration	362210-0250	250 mL	
Red Thiazine Fluo-RAL	362780-0125	125 mL	
Phenolic solution for Red Thiazine Fluo-RAL	362610-0125	125 mL	

*From 4 min 30 sec to 32 min according to protocol

Hot staining



Ziehl-Neelsen staining, reference method



The ZN staining kit is intended for use in the differential staining of acid-fast bacilli (AFB). This kit allows Ziehl-Neelsen staining in accordance with WHO and IUATLD recommendations. This stain is ready to use and provides a reliable and reproducible diagnosis in 17 min 30 sec.



Highlighting of mycobacteria using the RAL ZN staining



RAL ZN staining kit (3 x 1L)

Product	Reference	Packaging	Protocol duration
RAL ZN Staining kit (3x1L)	365400-0000	1 kit	17min30sec
Estimated number of tests			400 to 600 slides
Kit components			
ZN Carbolic Fuchsin	365310-1000	1 x 1000 mL	
ZN Acid-Alcohol 3%	365320-1000	1 x 1000 mL	
ZN Methylene Blue 0.3%	365330-1000	1 x 1000 mL	

Fast cold staining



Kit Quick-TB

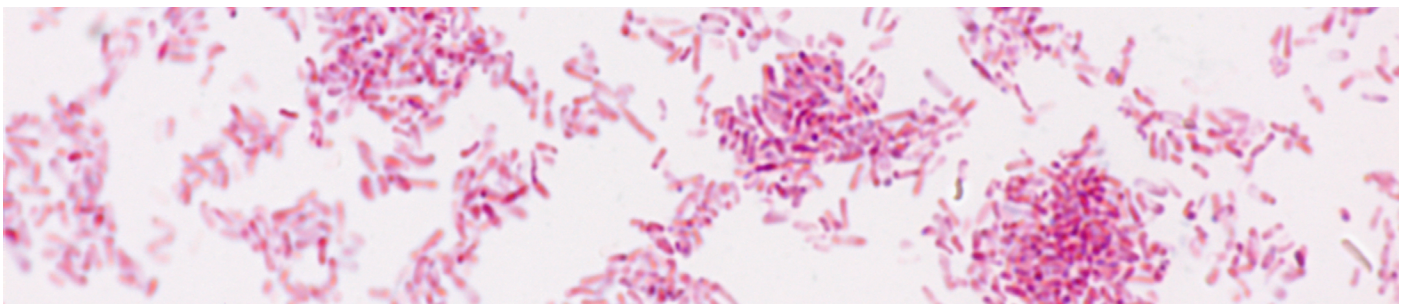


Time-efficient procedure & result



Improving laboratory safety

The Quick-TB kit is a two-step staining technique that enables rapid and reliable detection of mycobacteria.



Staining of *M. gordonae* using the Kit Quick-TB



Kit Quick-TB

Product	Reference	Packaging	Protocol duration
Kit Quick-TB	361560-0000	1 kit	6 min
Estimated number of testsuntil 200 slides			
Kit components			
Armand solution	360100-0125	125 mL	
Carbolic Fuchsin RAL	365240-0125	125 mL	

Cold staining



Kit Cold-ZN



Simplified and optimized protocol



Improving laboratory safety

This kit enables cold staining of acid-fast bacilli (AFB) based on the traditional Ziehl-Neelsen method. This four-step method produces results similar to the hot ZN technique while protecting technicians from toxic fumes and tedious handling.



Highlighting of mycobacteria using the Kit Cold-ZN

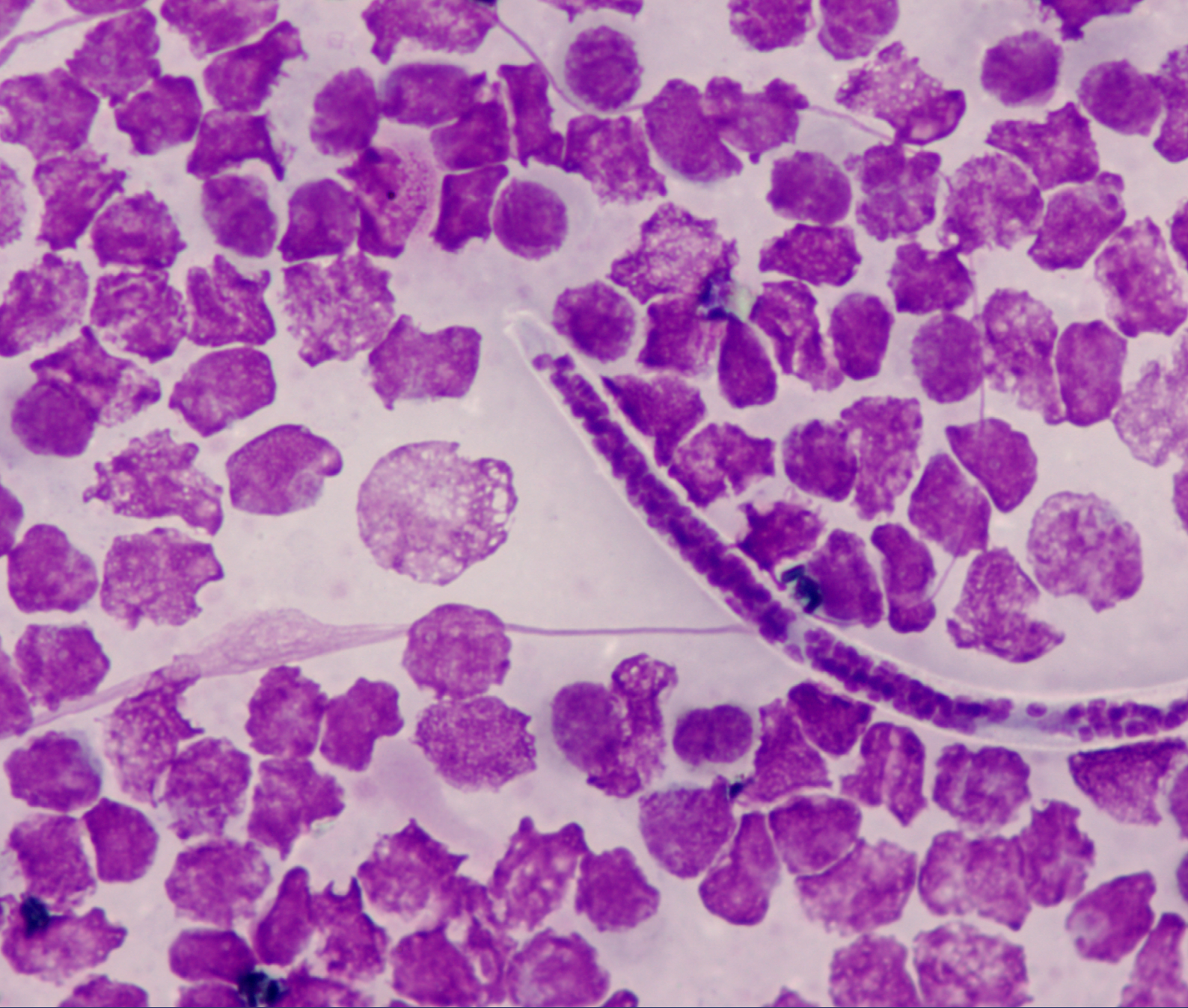


Kit Cold-ZN

Product	Reference	Packaging	Protocol duration
Kit Cold-ZN	362390-0000	1 kit	18 min 30 sec
Estimated number of testsuntil 150 slides			
Kit components			
Fixative	362120-0240	240 mL	
Fuchsin	365250-0240	240 mL	
Discoloring solution	362215-0240	240 mL	
Methylene blue	365340-0240	240 mL	

Bottles sold individually

Product	Reference	Packaging
Surefix	336000-0050	50 mL
Phenolic Gentian Violet	320960-1000	1000 mL
PVP-stabilized Lugol solution	367400-1000	1000 mL
Rapid Differentiator	361510-2500	2500 mL
Ziehl Fuchsin	320490-1000	1000 mL
Crystal Violet oxalate	361490-1000	1000 mL
Safranin	361500-1000	1000 mL



4 | PARASITOLOGY - MYCOLOGY

The parasitology and mycology range offers the possibility of staining, and assisting in the diagnosis of a wide range of pathogens within various sample matrices.

It consists of gold standards and innovations that improve the speed of protocols, the quality and reproducibility of results, and user safety.

Suitable for human biology and veterinary use, these reagents comply with current techniques and recommendations.

Rapid staining of tissue and blood parasites in human and veterinary biology

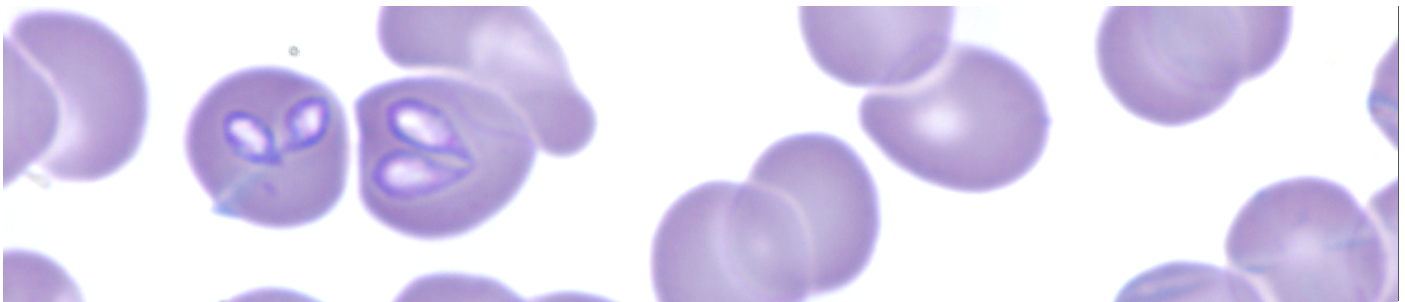


Kit RAL 555 - Rapid staining kit for parasitology and mycology

Result standardization

Time-efficient procedure

The RAL 555 kit is a rapid variant of Romanowsky staining. It is used to detect blood and tissue parasites, in both human and veterinary biology. As a versatile stain, the 555 kit can also be used in hematology (blood and bone marrow smears), histology, spermiology, and cytobacteriology.



RAL 555 staining of blood smear from a dog with Babesiosis (Obj. x100)



Product	Reference	Packaging	Protocol duration
Kit RAL 555	361550-0000	1 kit (3 x 100 mL)	15 sec
Estimated number of testsuntil 200 slides			
Kit components			
FIX-RAL 555	362870-0100	100 mL	
Eosin-RAL 555	361640-0100	100 mL	
Blue-RAL 555	361650-0100	100 mL	

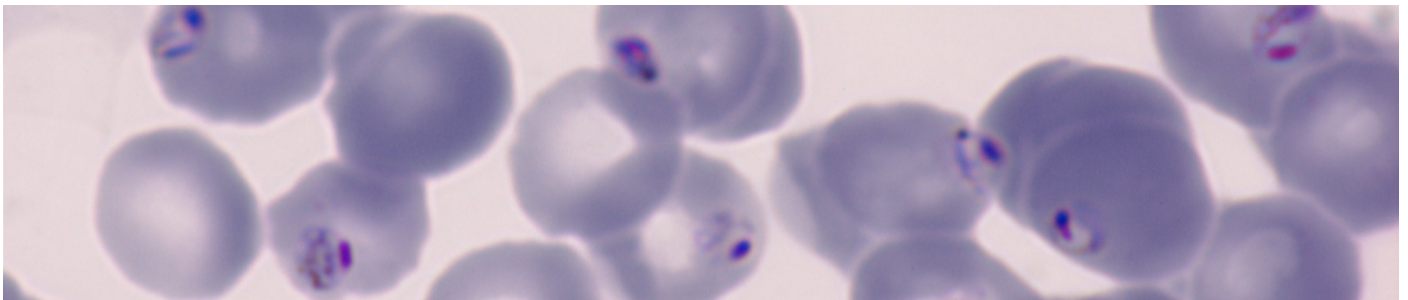
Giemsa staining in parasitology and mycology

Gold Standard in Parasitological Staining



**Result
standardization**

Giemsa staining is the most used panoptic staining method in parasitology, particularly for the research of tissue and blood protozoa. It can be used in human and veterinary mycology. Due to its complex composition, Giemsa stain cytoplasmic structures blue and nuclear structures or other organelles containing nucleic acids purple-red. Giemsa is therefore still considered by the WHO to be the gold standard for detecting and identifying the malaria parasite.



*Giemsa staining of peripheral blood smear from a patient infected by *P. falciparum**



*Giemsa R
solution*

Product	Reference	Packaging
Giemsa R solution	320310-1000	1000 mL
Or in solution		
pH = 6.8 buffer	330368-5000	5000 mL
pH = 7.0 buffer	330370-5000	5000 mL

Mycology

Detection of fungal elements in various types of biological samples.
Staining with lactophenol blue

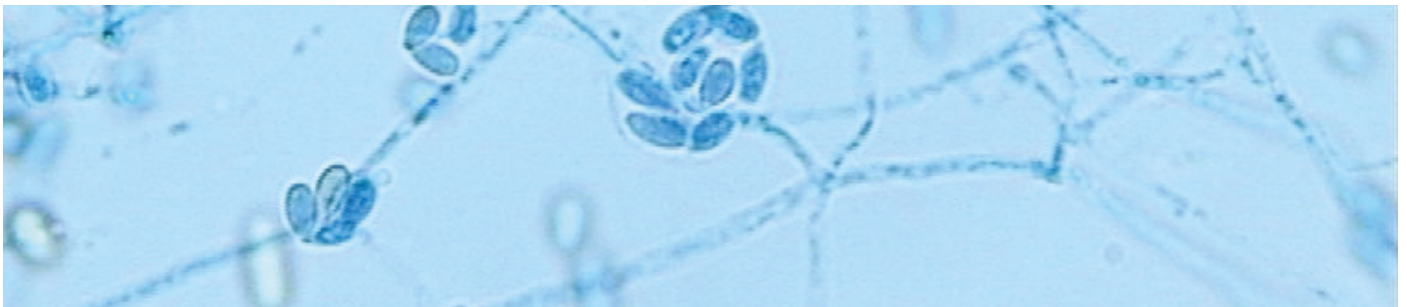


**Result
standardization**



**Time-efficient
procedure**

The Gram-Hücker, 555, PAS, and Giemsa stains we offer allow the detection of fungal elements in various biological samples. These reagents ensure clear visualization of fungal structures. In other words, staining by the Lactophenol Blue simultaneously brightens the preparation (the appendages and stains fungi blue for optimal microscopic observation).

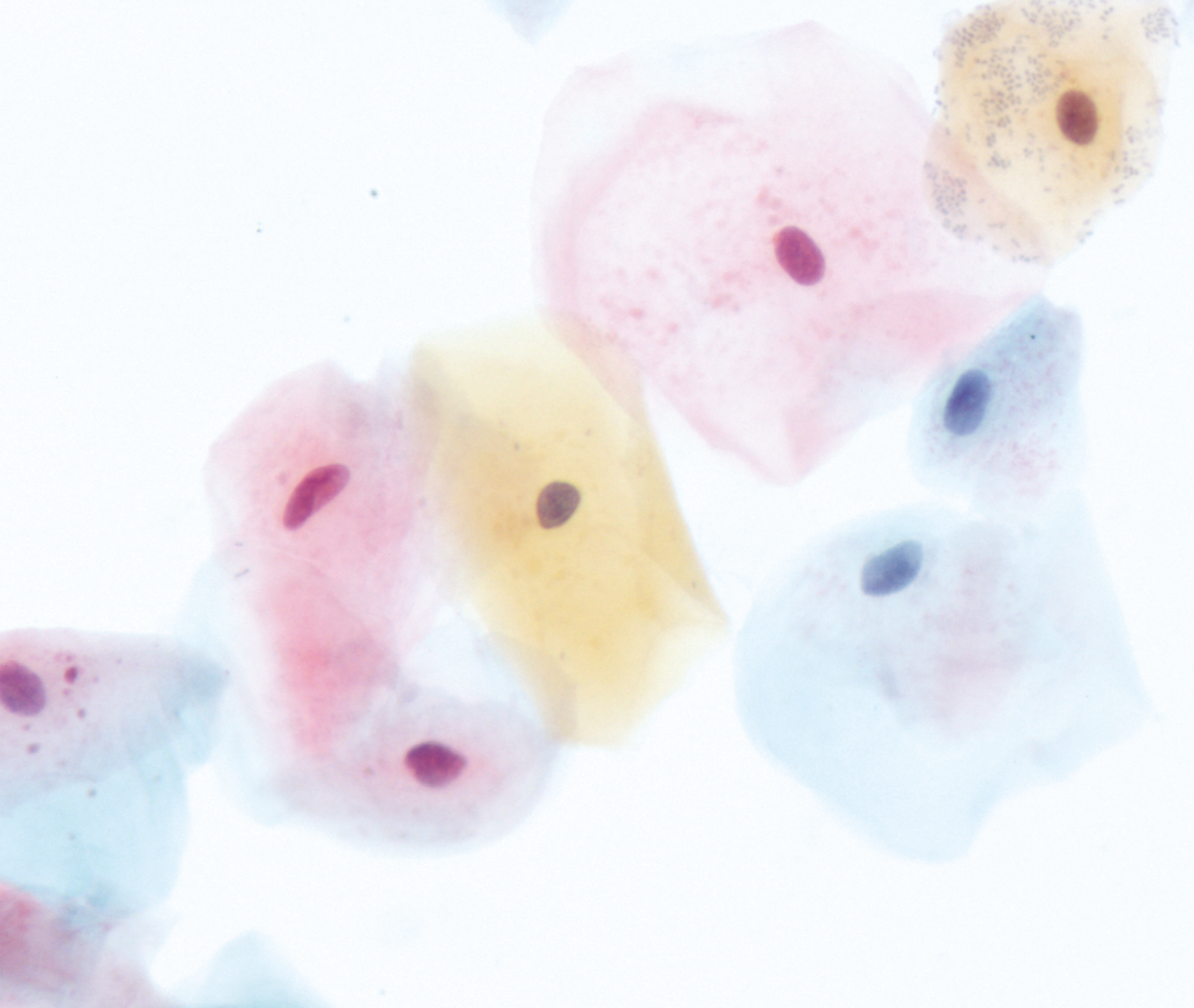


Lactophenol blue staining of *Scedosporium* (Obj. x40)



Lactophenol
blue

Product	Reference	Packaging	Protocol duration
Lactophenol blue	363060-1000	1000 mL	3 min



5 | CYTOLOGY

The cytology range provides reliable staining solutions for the evaluation and characterization of cells.

It includes reference techniques such as Papanicolaou staining for hormonal cytology, as well as specific kit such as Kit Vita-Eosine for sperm viability assessment and complementary stains including Shorr stain and Harris hematoxylin.

Designed for human biology and veterinary applications, these reagents ensure high-quality staining, reproducibility of results, and compliance with current cytological practices and recommended.

Hormonal cytology



Papanicolaou staining

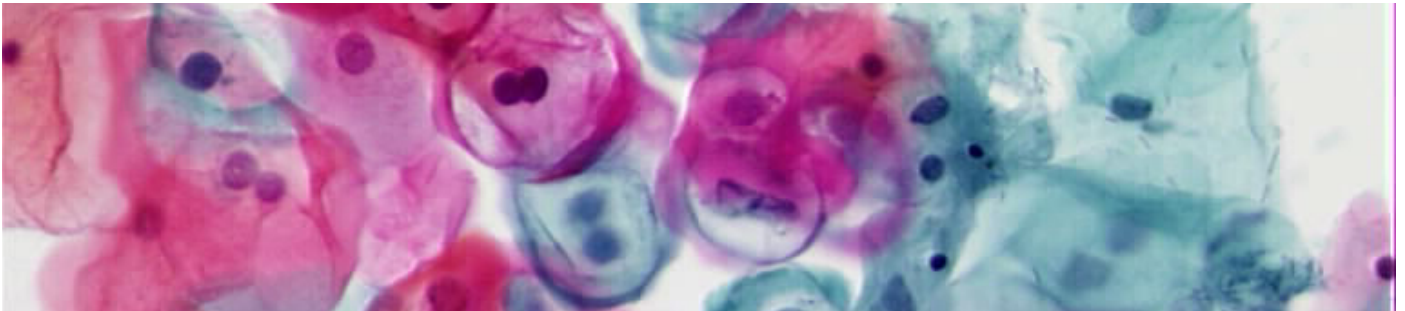


**Result
standardization**



**Simplified staining
protocol**

Papanicolaou staining combines a nuclear dye, Harris' hematoxylin, with two cytoplasmic dyes, Papanicolaou OG6 and EA50. It is the most used technique for the diagnosis of cervical cancer. This staining method is the most commonly used technique for diagnosing cervical cancer. It is also used for the morphological analysis of sperm (sperm analysis).



Papanicolaou staining of oral smear



*OG6 Papanicolaou
Solution*

Product	Reference	Packaging	Protocol duration
Harris hematoxylin, regressive variation	361070-1000	1000 mL	20 min
OG6 Papanicolaou Solution	361630-1000	1000 mL	
EA50 Papanicolaou Solution	367600-1000	1000 mL	

*From 20 min to 45 min according to protocol

Differentiating sperm to determine vitality rates



Kit Vita-Eosine



Time-efficient procedure



Easy interpretation of result

A semen analysis makes it possible, among other things, to determine the percentage of dead and live sperm in a sample. Only dead sperm are stained pink by eosin. Live sperm do not take up the stain, but their outlines are traced in dark blue by nigrosine.



Sperm staining using the Kit Vita-Eosine (Obj. x100)



Kit Vita-Eosine

Product	Reference	Packaging	Protocol duration
Kit Vita-Eosine	380420-0000	1 kit	1 min
Estimated number of tests			1000 slides
Kit components			
Eosin solution	363200-0100	1 x 100 mL	
Nigrosin solution	363210-0100	1 x 100 mL	

Other staining in cytology



Kit RAL 555 - Rapid variation of May-Grünwald Giemsa staining

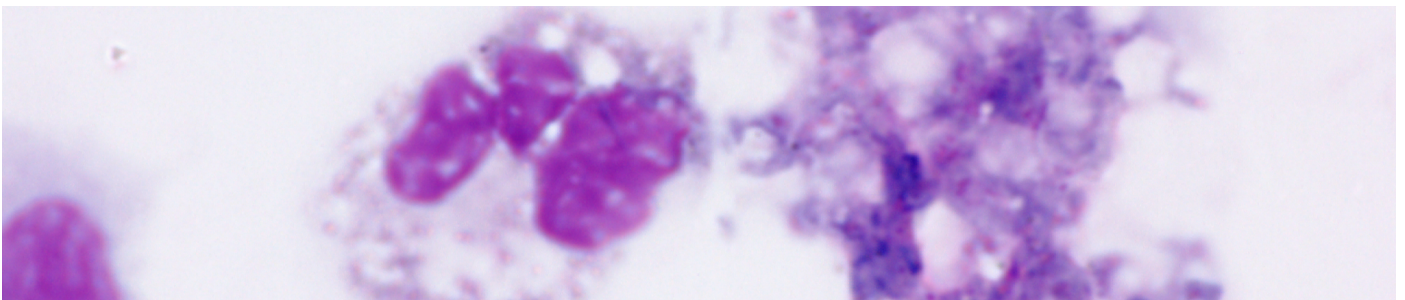


**Result
standardization**



**Time-efficient
procedure**

The RAL 555 kit is a rapid variant of Romanowsky staining. It is a versatile stain that can be used in hematology (bone marrow and blood smears), parasitology, histology, sperm analysis, and cytbacteriology.



RAL 555 staining of bronchoalveolar liquid sample from a patient infected by *Pneumocystis carinii* (Obj. x100)

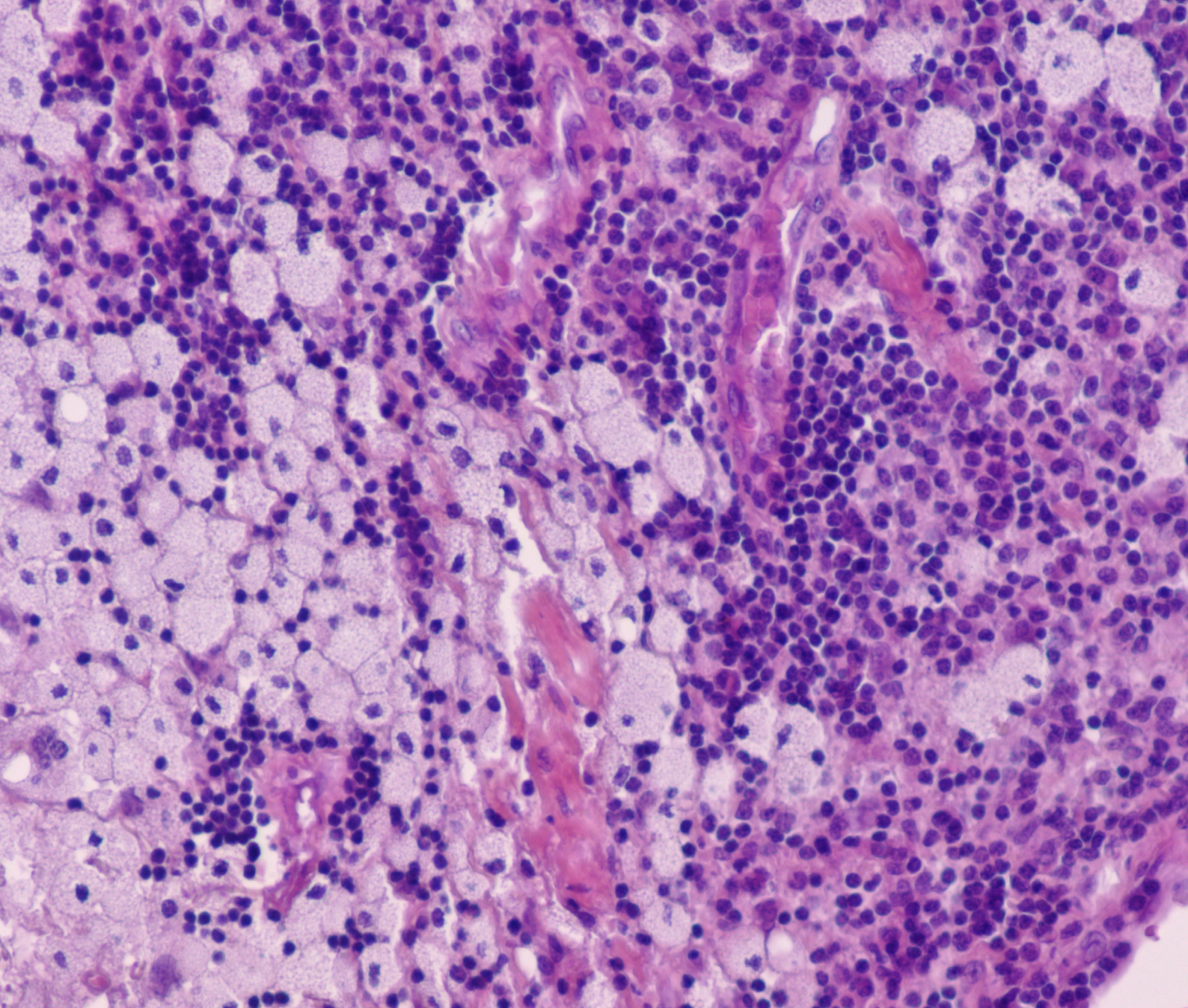


Kit RAL 555

Product	Reference	Packaging	Protocol duration
Kit RAL 555	361550-0000	1 kit (3 x 100 mL)	22 sec (<i>Helicobacter pylori</i>)
Estimated number of tests.....			until 200 slides
Kit components			
Fix-RAL 555	362870-0100	100 mL	
Eosin-RAL 555	361640--0100	100 mL	
Blue-RAL 555	361650--0100	100 mL	

Bottles sold individually

Product	Reference	Packaging
Harris hematoxylin	361070-1000	1000 mL
Papanicolaou EA50 stain	367600-1000	1000 mL
Papanicolaou OG6 stain	361630-1000	1000 mL
Shorr stain	361100-1000	1000 mL



6 | HISTOLOGY

The reagents and stains in the Histology range are available in kits or individual formats to suit all activities and specific features of the selected techniques.

Each stain helps to highlight specific cellular and tissue elements.

The range also includes a decalcification reagent designed for staining large anatomical specimens.

Common histological stains

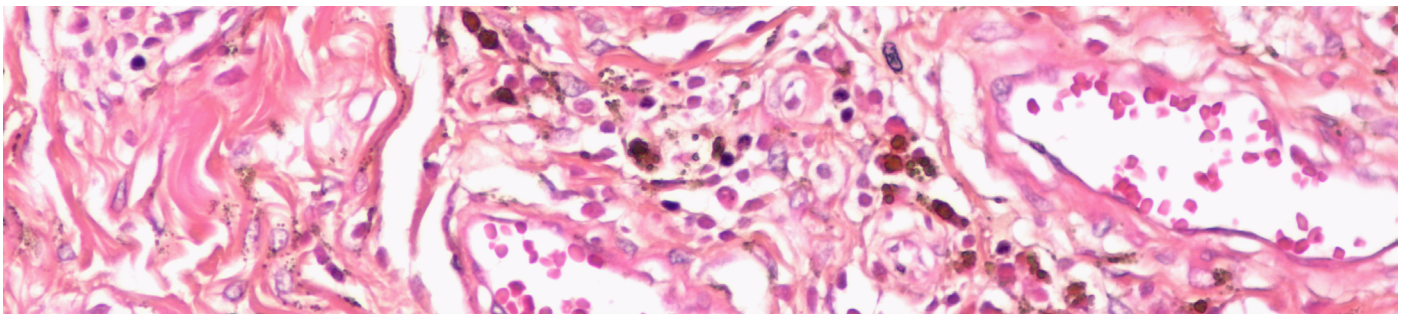
Eosin and variants

bichromatic stainings: Hematoxylin-Eosin and variants



Result
standardization

Hematoxylin-Eosin (HE) staining is a two-step staining technique for histopathology. It uses of a nuclear stain, hematoxylin or mayer hemalum, and a cytoplasmic stain, eosin.



HE staining of synovial (Obj. x20)



Mayer
hemalum

Product	Reference	Packaging
Mayer hemalum	320550-1000	1000 mL
Harris Hematoxylin	361070-1000	1000 mL
Eosin 1% aqueous solution	312740-1000	1000 mL

Trichromatic stains: Hematoxylin-Eosin-Saffron and variants

Saffron in alcoholic solution	369200-1000	1000 mL
-------------------------------	-------------	---------

Fast histological staining

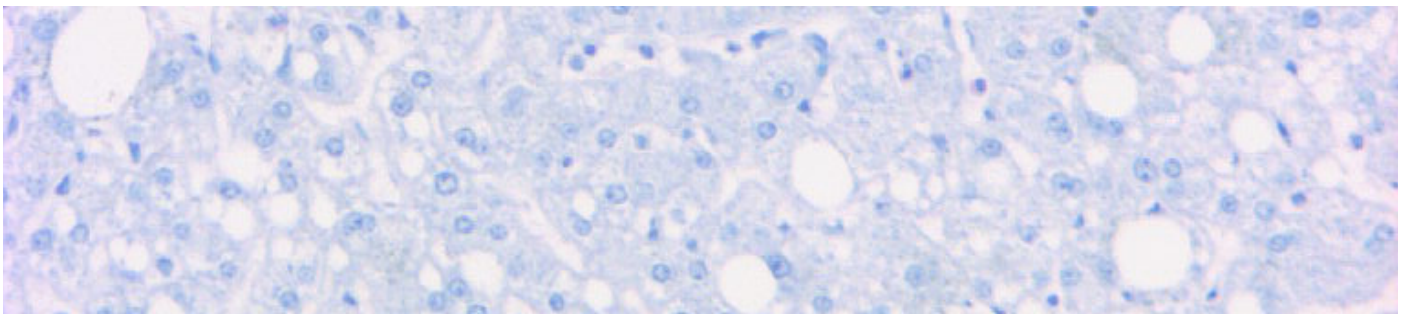


Kit RAL 555 - Rapid variation of May-Grünwald Giemsa staining

Result standardization

Time-efficient procedure

The RAL 555 kit is a rapid variant of Romanowsky staining. It is a versatile stain that can be used in hematology (bone marrow and blood smears), parasitology, histology, sperm analysis, and cytobacteriology.



RAL 555 staining of hepatic section from a patient with hemangioma



Product	Reference	Packaging	Protocol duration
Kit RAL 555	361550-0000	1 kit (3 x 100 mL)	23 sec
Estimated number of tests			200 slides
Fix-RAL 555	362870-0100	100 mL	
Eosin-RAL 555	361640-0100	100 mL	
Blue-RAL 555	361650-0100	100 mL	

Standard histological and histochemical staining



Kit Trichrome of Masson, light green variant - Staining for histological and cytological studies of tissue sections

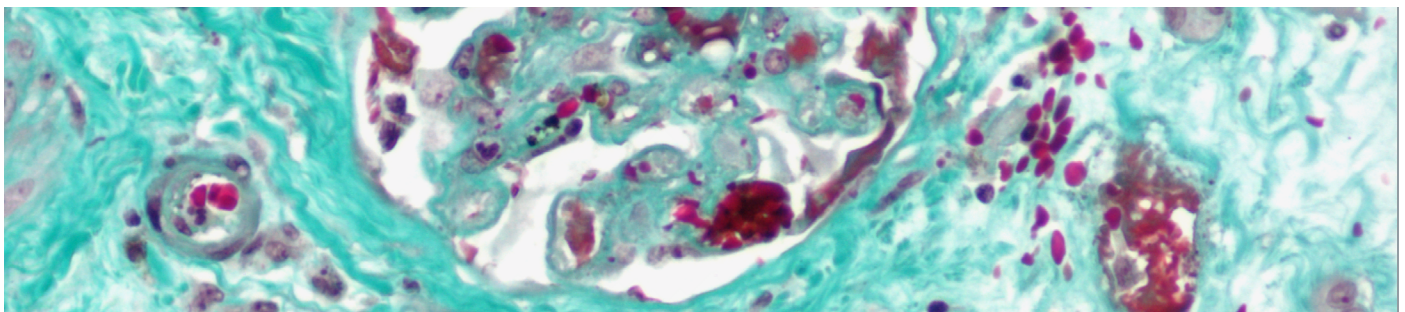


Simplified and optimized protocol



Excellent contrast

Staining with the Masson's trichrome kit, light green variant, allows trichrome staining of histological sections with selective staining of collagen using light green. Mayer's hematoxylin stains nuclei blue-black or brown, fuchsin-ponceau solution stains cytoplasm pink-red, and light green stains collagen green.



Trichromic staining of a kidney section from a patient with transplant rejection (Obj. x20)



Kit Trichrome de Masson, light green variant

Product	Reference	Packaging	Protocol duration
Kit Trichrome de Masson, light green variant	361350-0000	1 kit	28 min
Estimated number of tests			60 slides
Mayer hemalum	320550-0100	100 mL	
Light green	361700-0100	100 mL	
Phosphomolybdic acid	3617603B100	100 mL	
Fuchsin-Ponceau	3617702B100	100 mL	
1% acetic acid solution	3618105B100	100 mL	
1% acetic acid solution	3618406B100	100 mL	

Product	Reference	Packaging
Giemsa R Solution	320310-1000	1000 mL

Perls staining for the detection of hemosiderin

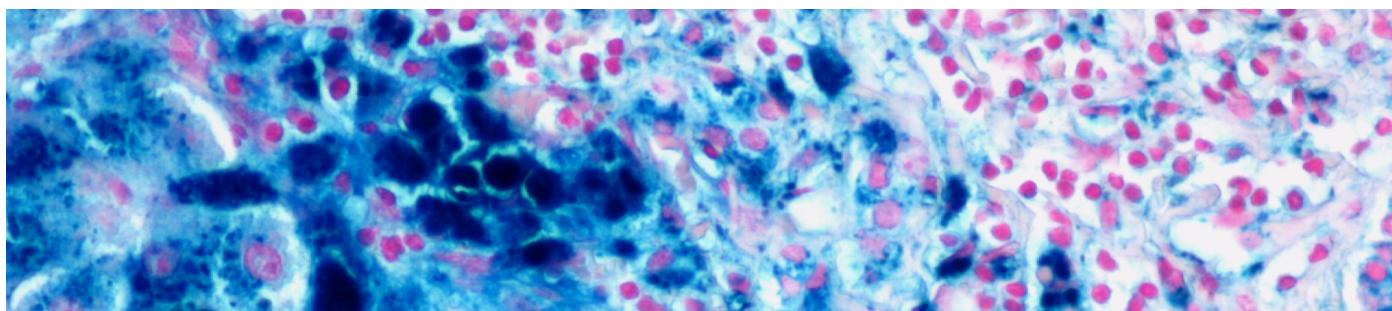


Kit HistoPerls - Pathological pigment (ferric salts - Prussian blue)

Result standardization

Simplified staining workflow

In an acidic environment, ferric ions react with potassium ferrocyanide to form a precipitate of ferric ferrocyanide (Prussian blue), which highlights a pathological pigment called hemosiderin.



Staining of liver section using the Kit HistoPerls from a patient with a cirrhosis in hemochromatosis (Obj. x20)

Product	Reference	Packaging	Protocol duration
Kit HistoPerls	361850-0000	1 kit	40min*
Estimated number of tests			50 slides
Kit components			
Nuclear red solution	320910-0100	1 x 100 mL	
Acid buffer and potassium ferrocyanide	361955-0005	10 x 5 mL	



Kit HistoPerls

*From 40 min to 43 min according to protocol

P.A.S. staining for the detection of carbohydrates



For accurate visualization of carbohydrates substances in histological sections

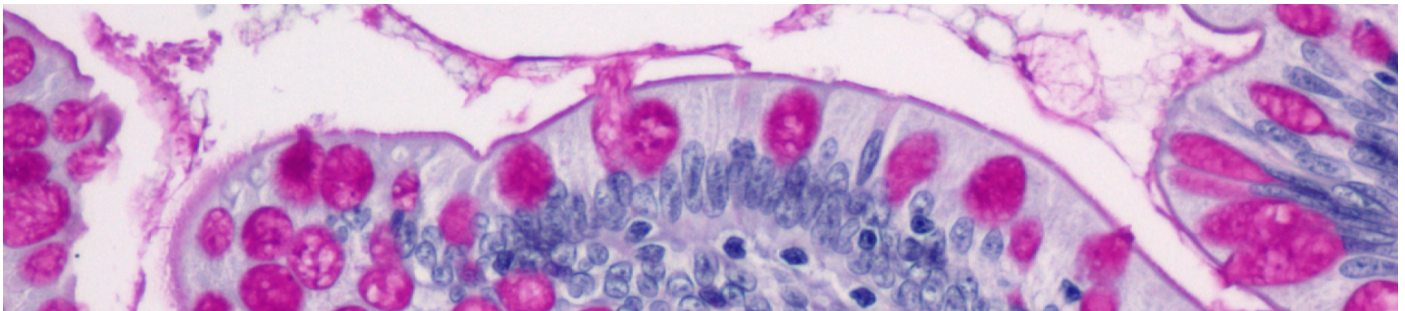


Reliable detection of polysaccharides



Clear visualization of carbohydrate-rich structure

Periodic acid Schiff (PAS) staining is a staining technique used in histology and mycology. It stains carbohydrates and glycoproteins in the cell walls of certain pathogens.



PAS staining of small intestine section from a patient with a Meckel's diverticulum (Obj. x20)



Schiff reagent



Mayer hemalum

Product	Reference	Packaging	Protocol duration
Schiff reagent	320680-1000	1000 mL	1h46min
Mayer hemalum	320550-1000	1000 mL	

Specific products in histology

Decalcification for anatomical specimens: OsteoRAL, decalcifier for large anatomical specimens



Reliable histological results



Time-efficient process

OsteoRAL R is intended for use in the decalcification of large anatomical specimens prior to microtome sectioning.



Bone decalcification using OsteoRAL R solution



OsteoRAL R

Product	Reference	Packaging
OsteoRAL R	320715-2500	2500 mL

Bottles and powders sold individually

Product	Reference	Packaging
Erythrosine B in 1% aqueous solution	361990-1000	1000 mL

Other products and stainings for various applications

Immersion oil

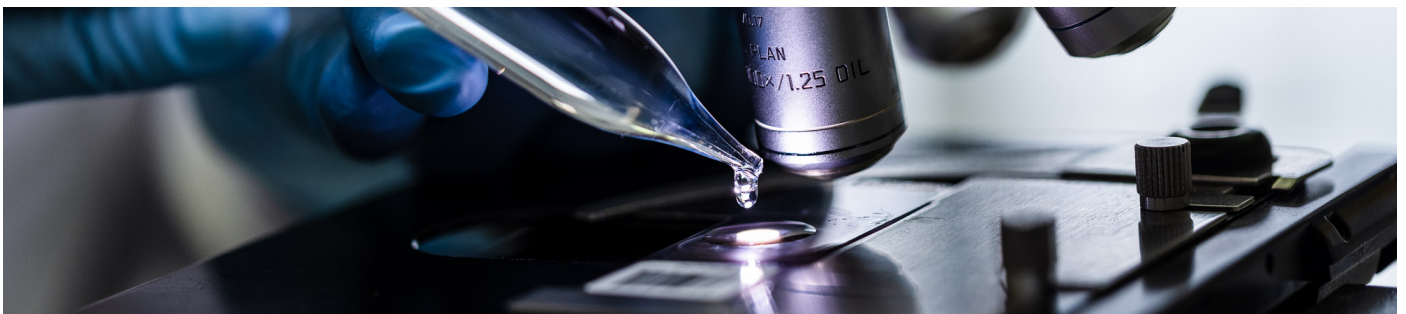


**Controlled oil spreading
for cleaner microscopy**



**Improving
laboratory safety**

Immersion oil was created for observing microscopic preparations under immersion objectives. Its high quality optimizes slide viewing. It has the same refractive index as glass and offers unmatched transparency, allowing for very comfortable microscopic observation.

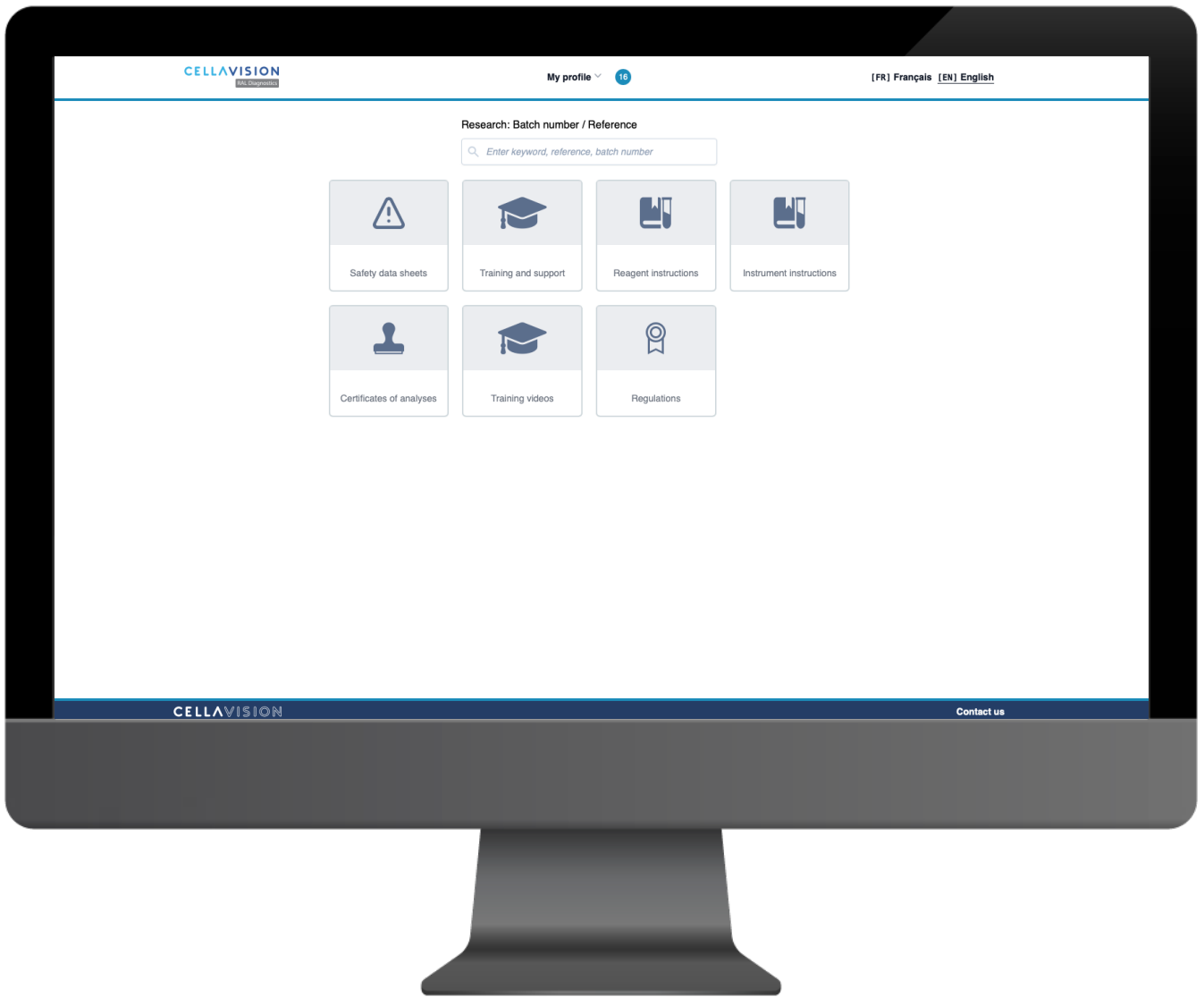


Drop deposit of immersion oil



*Pack Dropstand
Immersion 100*

Product	Reference	Packaging
Pack DropStand Immersion 100	340103-0000	7 x 15 mL et 1 DropStand
Pack Immersion 150	340150-0000	6 x 25 mL (150 mL)



7 | DOCUMENTARY PLATFORM

MyRALdiagnostics is an online platform dedicated to providing access to all of our technical documents.

It also includes a Training and Support section, designed to help our users master and use our products. Designed to offer centralized, fast, and secure access, MyRALdiagnostics simplifies the management and consultation of your technical resources.

MyRALdiagnostics

What are the benefits?

- You will receive an email notification when a document you have already downloaded has been updated.
- Your personal space contains your download history.
- Documents are available in several languages.

Personal space Languages

CELLAVISION My profile 16 [FR] Français [EN] English

Research: Batch number / Reference

Enter keyword, reference, batch number

Search by categories

- Safety data sheets
- Training and support
- Reagent instructions
- Instrument instructions
- Certificates of analyses
- Training videos
- Regulations

My subscriptions 82 New versions available 16

Here are all the documents you have already downloaded. You can unsubscribe anytime if you no longer wish to receive update notifications by e-mail.

Category	Document	Last download date	DOWNLOAD ALL MY SUBSCRIPTIONS		
NEW	Reagent instructions	MCDh staining	Tuesday, December 9, 2025 at 12:18 PM	DOWNLOAD NEW VERSION Published on December 9, 2025	UNSUBSCRIBE
NEW	Reagent instructions	Lactophenol blue	Friday, October 4, 2024 at 2:49 PM	DOWNLOAD NEW VERSION Published on November 21, 2025	UNSUBSCRIBE
	Reagent instructions	Kit RAL Stainer Fluo-RAL	Wednesday, November 5, 2025 at 12:27 PM	DOWNLOAD FILE AGAIN Published on November 5, 2025	UNSUBSCRIBE
	Certificates of analyses	P49243 - pH=7.0 BUFFER SOLUTION FOR SP AUTOMATED SYSTEMS	Monday, November 3, 2025 at 12:19 PM	DOWNLOAD FILE AGAIN Published on October 24, 2025	UNSUBSCRIBE

Your files updates

CELLAVISION My profile 16 [FR] Français [EN] English

Register an instrument

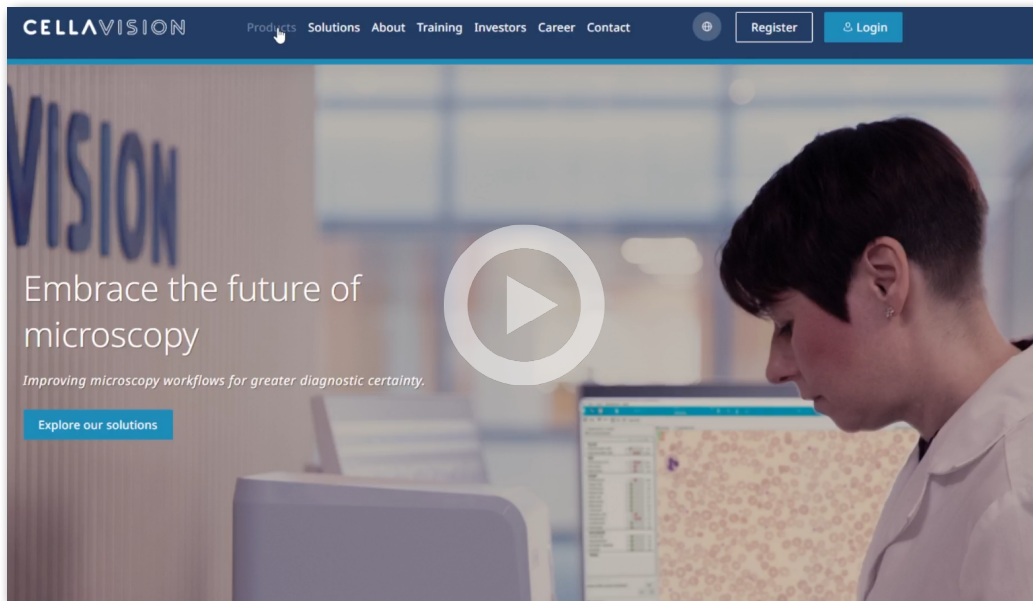
- My account
Display informations about my account
- My subscriptions
Display downloaded files
- Display new versions
Display updated files
- My instruments
Register an instrument
- Log out

MyRALdiagnostics

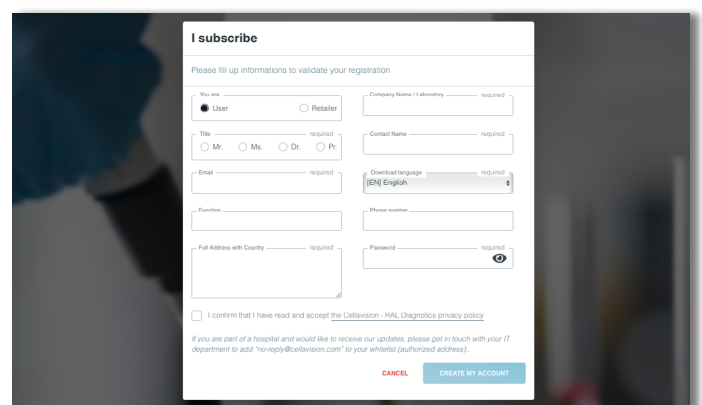
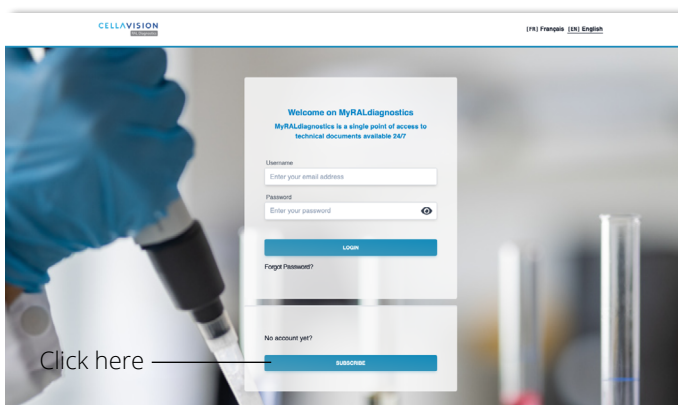
How to subscribe?

To access the platform and download documents, you must create an account. There are two ways to log in:

On cellavision.com, the platform link is available at the bottom of each “reagents” product page on our website.



Or go directly to my.ral-diagnostics.fr



Click on “Subscribe” and fill in the information to confirm your registration.



Contact

Technopole Montesquieu - 2 rue Jacques Monod
33650 Martillac - France
+33 (0) 557 960 404

cellavision.com
commercial@cellavision.com

cellavision.com

