

Kit RAL® Kleihauer-Betke

Kit RAL Kleihauer-Betke is a fetal red cell stain used to quantify the amount of fetal blood which has entered the maternal circulation during pregnancy and childbirth. Its role is to distinguish between fetal red blood cells containing fetal hemoglobin (HbF) and adult red blood cells that contain mainly adult hemoglobin (HbA). The distinction relies on the greater resistance of HbF to acid elution compared to HbA. Fetal red blood cells stain in bright pink while adult red blood cells appear as cellular ghosts.

This RAL Kleihauer-Betke test is easy to implement and allows a clear differentiation between adult and fetal red blood cells.

Experience a new efficiency level as it streamlines your workflow, simplifying the entire process.

A clear result every time.



Features

High Quality staining

- Distinguishes white from red blood cells
- Provides a clean background
- Clear differentiation staining

Safer working environment

- Methanol-free stains

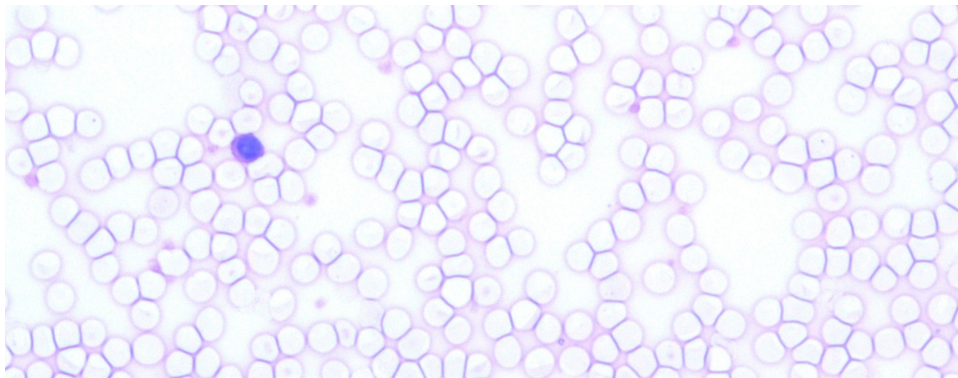
Time-Saving

- Quick and easy blood counting
- Works at room temperature
- Fast protocol (13min)

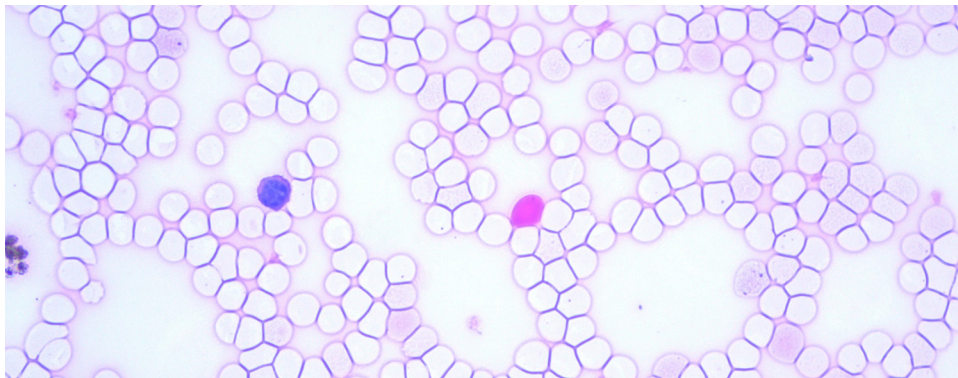
Reproducibility

- Delivers consistent results for every slide

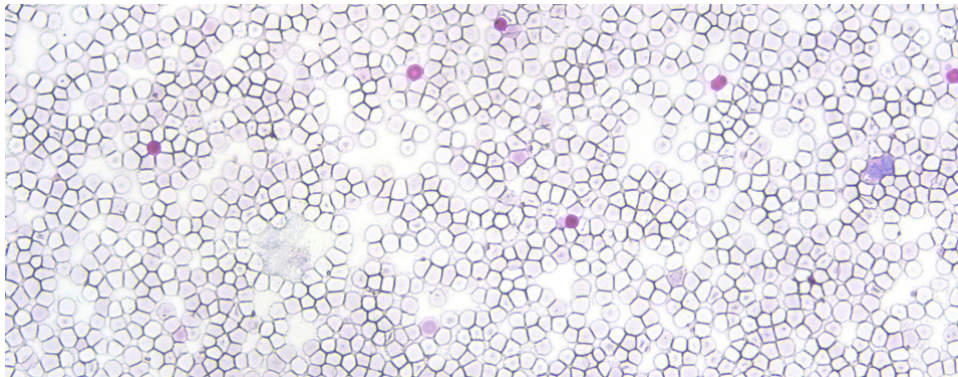
RAL Kleihauer-Betke manual staining of peripheral blood smear from a sample with no fetal red blood cells present, analysis with optical microscope - Obj. x40



RAL Kleihauer-Betke manual staining of peripheral blood smear from a sample with fetal red blood cells present, analysis with optical microscope - Obj. x40



RAL Kleihauer-Betke manual staining of peripheral blood smear from positive patient sample at low magnification - Obj. x20



Kit RAL® Kleihauer-Betke

Technical specifications

APPLICATIONS

- Blood samples

INTENDED USE

- Fixation and differential staining for detection of fetal red blood cells prior to microscopic examination.

PRODUCT DESCRIPTION

Solutions

Clear colorless solutions

- RAL Kleihauer-Betke Fixative
REF.: 313000-1000 (1L)

- RAL Kleihauer-Betke Eluting Solution
REF.: 313010-1000 (1L)

Clear purplish red solution

- RAL Kleihauer-Betke Stain
REF.: 313030-1000 (1L)

Clear light pink solution

- RAL Kleihauer-Betke Counterstain
REF.: 313020-1000 (1L)

STABILITY

- 24 months

NUMBER OF TESTS

- 500

STORAGE CONDITIONS

- 15-25°C
- Protected from light and heat

TECHNIQUE

- Manual staining

ANALYSIS METHOD

- Manual microscopy

TECHNICAL DOCUMENTATION

- Technical documents available on my.ral-diagnostics.fr