

## RAL® Classic Stains for Hematology Slide Maker Stainers

Specifically developed for automated staining systems, this range is composed of:

- **Stains:** May-Grünwald, Giemsa, Wright, Wright-Giemsa

RAL® Classic Stains are composed of a chemically improved formulation allowing greater reliability of slide maker stainers while delivering high contrast staining results.

- **pH Buffer Solutions:** 6.8, 7.0, 7.2

Our buffer solutions have been developed for use with May-Grünwald, Giemsa, Wright and Wright-Giemsa staining reagents and play an important role in optimizing stain definition. They help maintain a constant pH of the solution throughout the staining procedure, thus guaranteeing great staining quality and reproducibility.



### Features

#### High quality staining

- Reveals nuclear and cytoplasmic details
- Provides a clean background

#### Clean formulation

- Prevents precipitates
- Lowers SMS maintenance

#### Digital quality

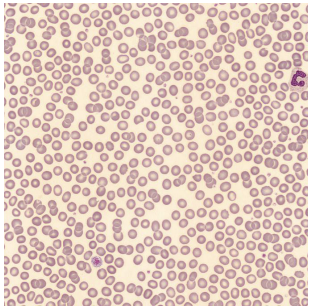
- Compatible with digital image analysis
- Produces high contrast

#### Reproducibility

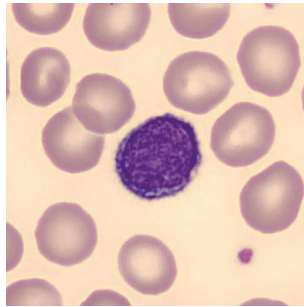
- Delivers consistent results for every slide

### MGG staining of peripheral blood smear with SMS from patient with normal CBC.

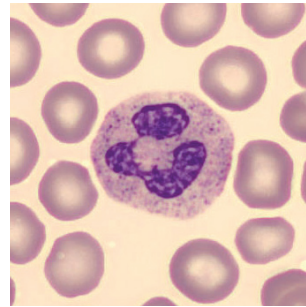
(analysis with DM1200 instrument)



Overview



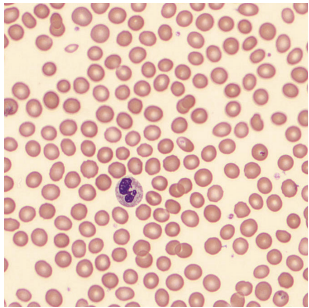
Lymphocyte



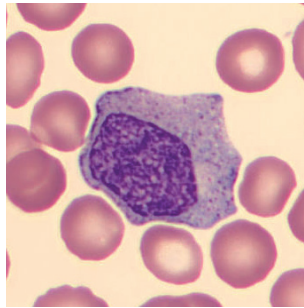
Neutrophil granulocyte

### Wright staining of peripheral blood smear with SMS from patient with normal CBC.

(analysis with DM9600 instrument)



Overview



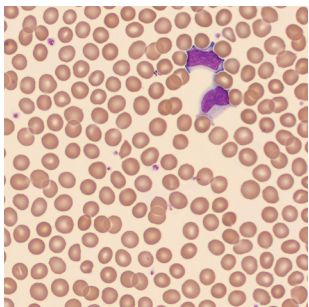
Monocyte



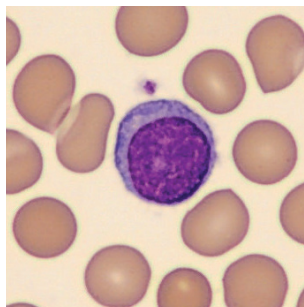
Neutrophil granulocyte

### Wright-Giemsa staining of peripheral blood smear with SMS from patient with normal CBC.

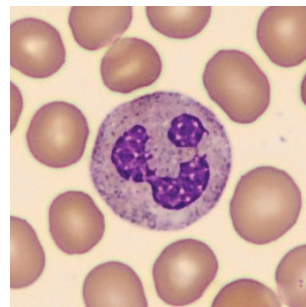
(analysis with DC-1 instrument)



Overview



Lymphocyte



Neutrophil granulocyte

## RAL® Classic Stains for Hematology

## Technical specifications

### APPLICATIONS

- Blood and bone-marrow samples

### INTENDED USES

- Identification of different types of cells
- Detection of abnormal or atypical cells

### PRODUCT DESCRIPTION

#### Stains

##### Clear dark blue solutions

- May-Grünwald solution for stainers  
REF.: 320830-2500 (2.5L)
- Giemsa solution for stainers  
REF.: 320450-2500 (2.5L)
- Wright solution  
REF.: 320400-2500 (2.5L)
- Wright-Giemsa stain RAL  
REF.: 330211-2500 (2.5L)

#### pH Buffer solutions

##### Clear colorless solutions

- pH 6.8 Buffer solution  
REF.: 330368-5000 (5L)
- pH 7.0 Buffer solution  
REF.: 330370-5000 (5L)
- pH 7.2 Buffer solution  
REF.: 330372-5000 (5L)

### STORAGE CONDITIONS

- 15-25°C
- Keep away from light and heat

### TECHNIQUE

- Automated staining

### COMPATIBLE EQUIPMENT

- Automated systems using bath staining technique

### ANALYSIS METHOD

- Digital image analysis
- Manual and digital microscopy

### TECHNICAL DOCUMENTATION

- Technical documents available on [my.ral-diagnostics.fr](http://my.ral-diagnostics.fr)