

## RAL<sup>®</sup> SmearBox

Empowers your laboratory to make high-quality peripheral blood smears with consistency and control. The automated instrument uses a patented consumable to produce smears directly from a closed whole sample tube. By establishing a closed-vial smearing methodology, the instrument effectively reduces exposure to biohazard while establishing a reliable and controlled smearing process.

The instrument is calibrated to produce smears that are ideally suited for analysis using CellaVision systems. Contributing towards an improved process for performing blood differentials.



### Features

Automated instrument

Suitable for **low-volume** labs

Promotes **efficiency, consistency and safety**

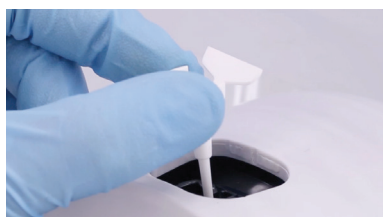
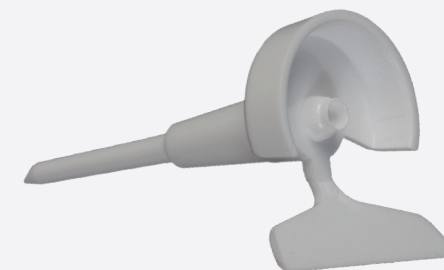
Produces **CellaVision compatible** smearing



RAL SmearBox is used together with a consumable – the RAL SmearBox Slide Spreader. The consumable performs three tasks. It pierces the blood tube, deposits a drop of blood, and then smears the blood on the slide.

The consumable is provided in packs of 10 x 48 units.

## The Associated Consumable



Insert a RAL SmearBox Slide Spreader



Insert selected slide



Insert selected blood tube

## RAL SmearBox

## Technical Specifications

### SIZE (W X D X H)

- 23.5 x 23.8 x 23.3 cm
- 9.25 x 9.37 x 9.17 inches

### WEIGHT

- 2.2 kg / 4.8 lbs

### CAPACITY

- 1 slide /cycle

### THROUGHPUT

- ~30 slides /hour

### TUBE AND SLIDE REQUIREMENTS

- Compatible with most tubes and slides according to ISO 8037/1-1986

### SUPPLY VOLTAGE RANGE

- 24 V with AC/DC power adapter 110-240 V

Specifications are subject to change without notice. This product may not be available in all markets.