

CELLAVISION

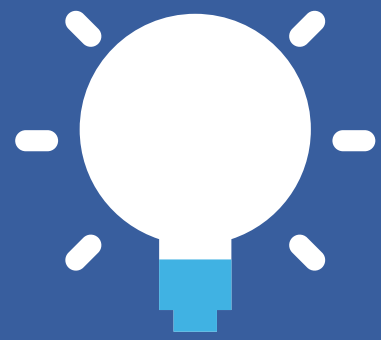
RAL Diagnostics

ONE STAINING  
ONE STORY

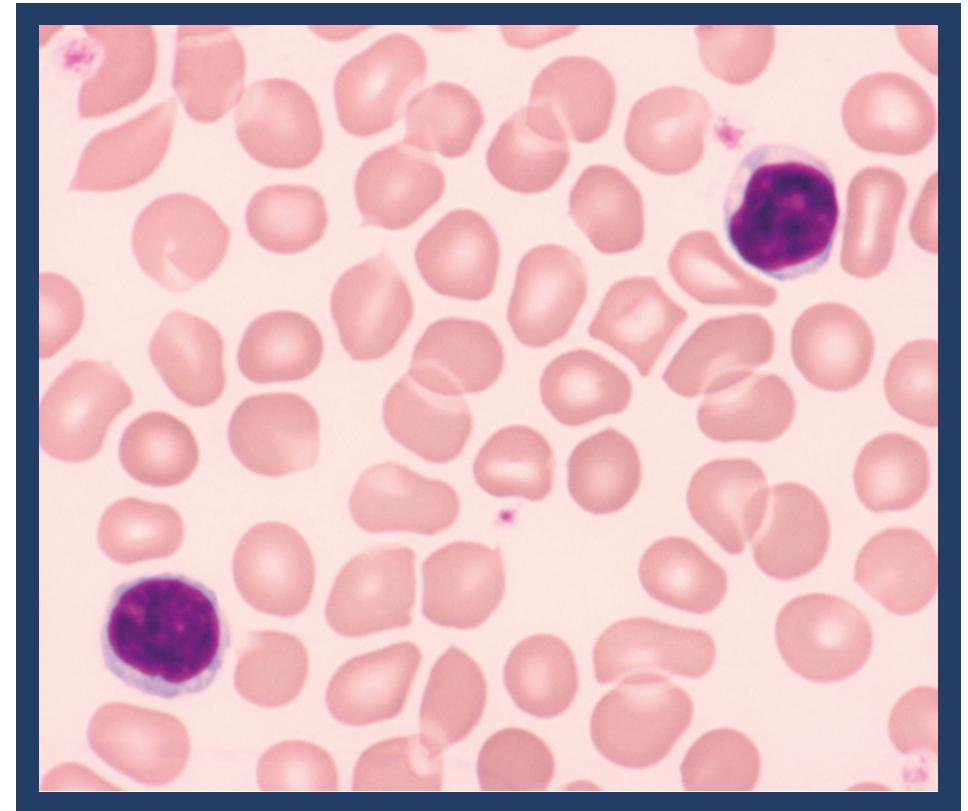
*May-Grünwald Giemsa stain*



**DID  
YOU  
KNOW?**

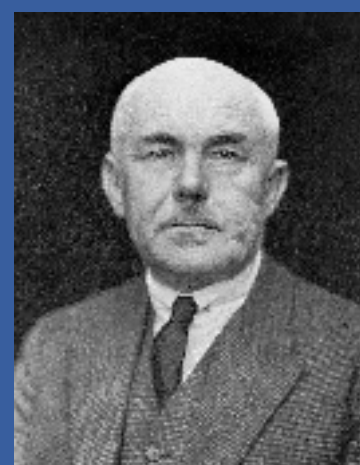


*May-Grünwald  
Giemsa stain*



Richard May & Ludwig Grünwald published a version of a hematological stain known as the **May-Grünwald stain** in 1892.

Gustav Giemsa improved the quality of this staining,



by adding **methylene blue**, which became a **standard component** of the modern staining procedure.

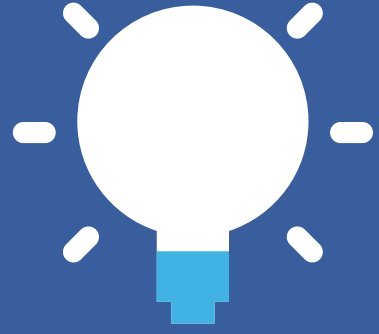
# WHY?



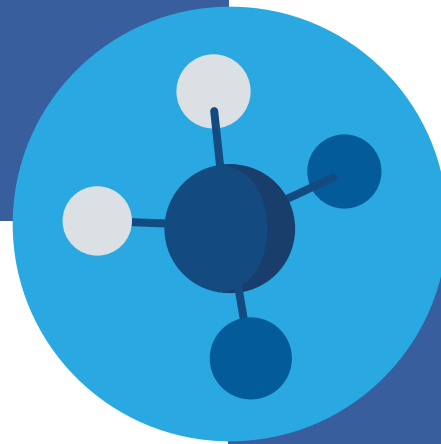
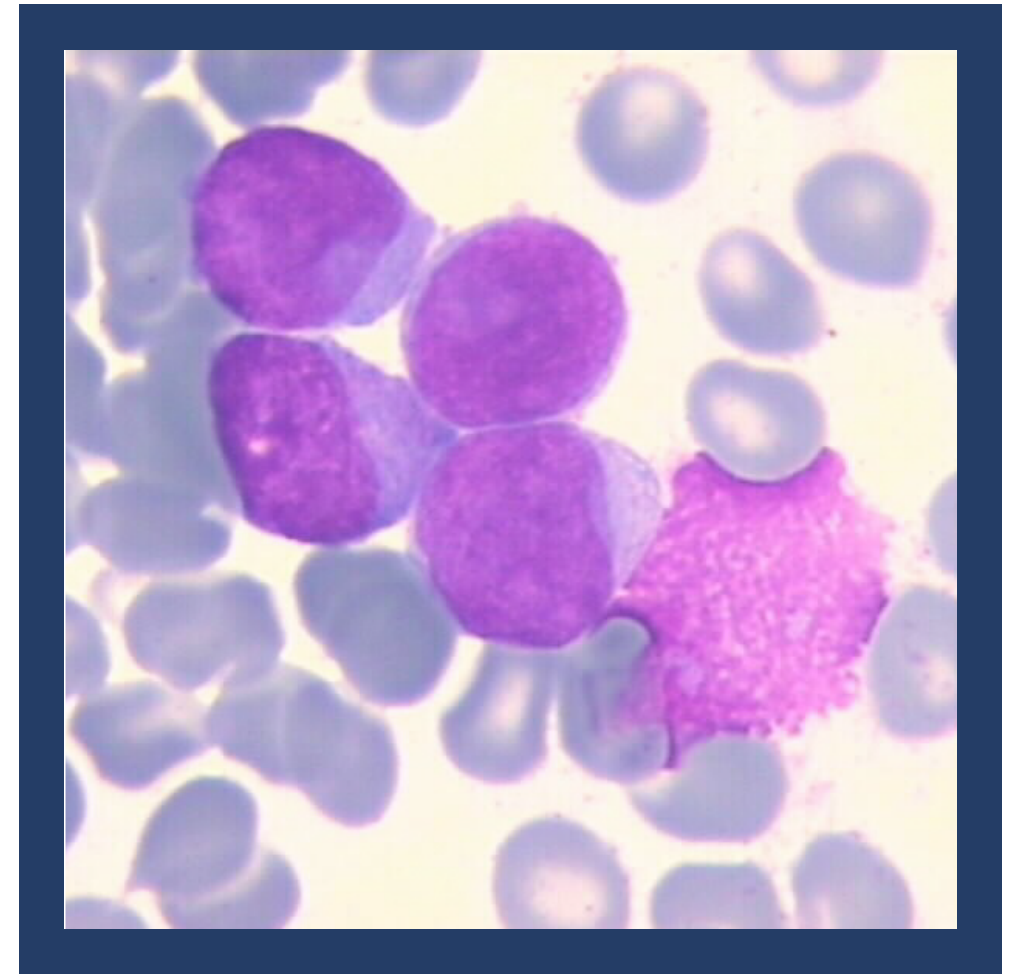
The May-Grünwald Giemsa stain is used mainly in **hematology** for blood & bone marrow analyses. It is also commonly used in **cytology** and for malaria detection.



# WHICH COMPONENTS?



*May-Grünwald  
Giemsa stain*



**May-Grünwald contains:**

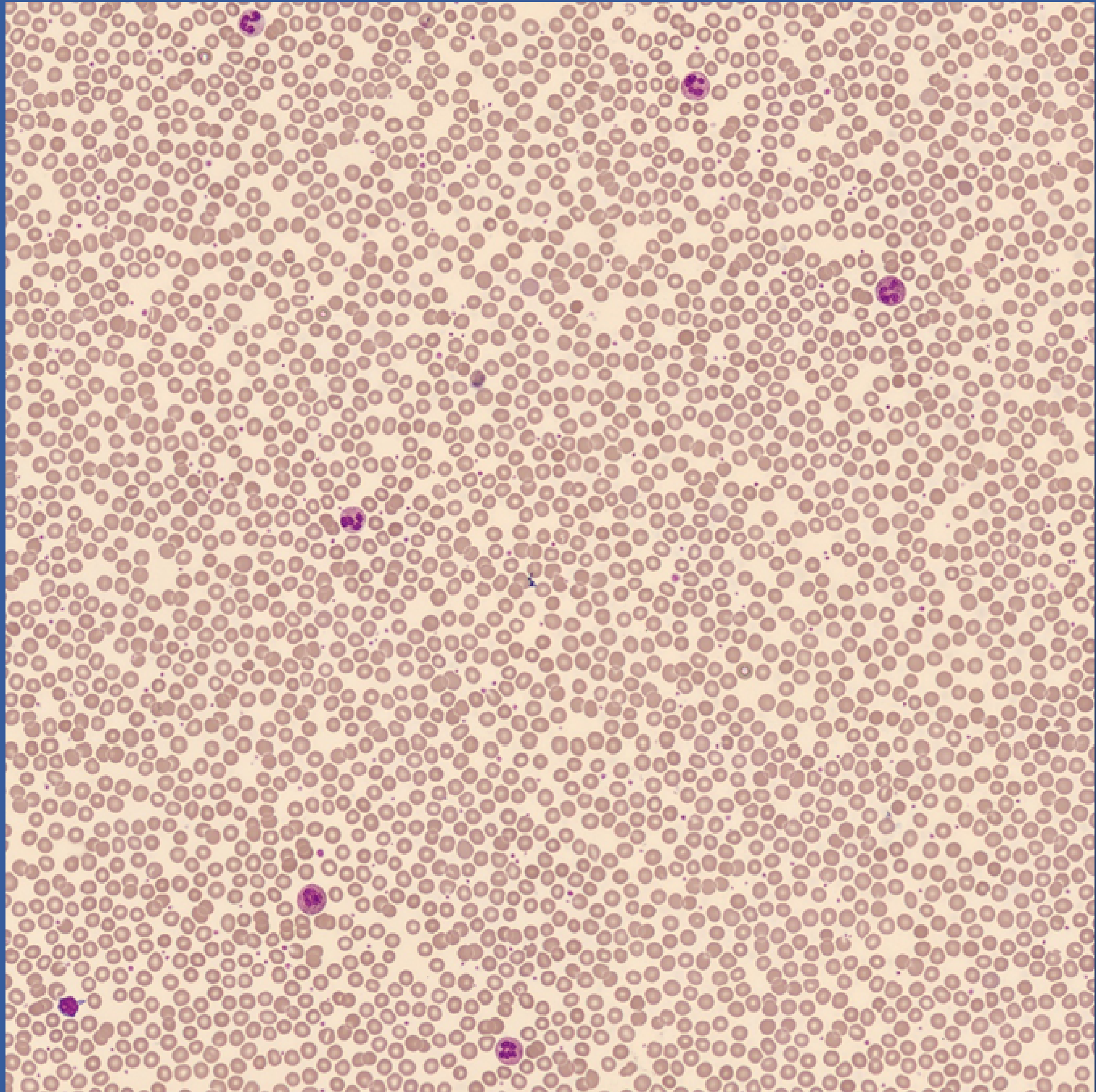
- an acidic dye, eosin
- a basic dye, methylene blue
- methanol.

**Giemsa contains:**

the same components as the May-Grünwald solution + a second basic dye, methylene blue & glycerin.

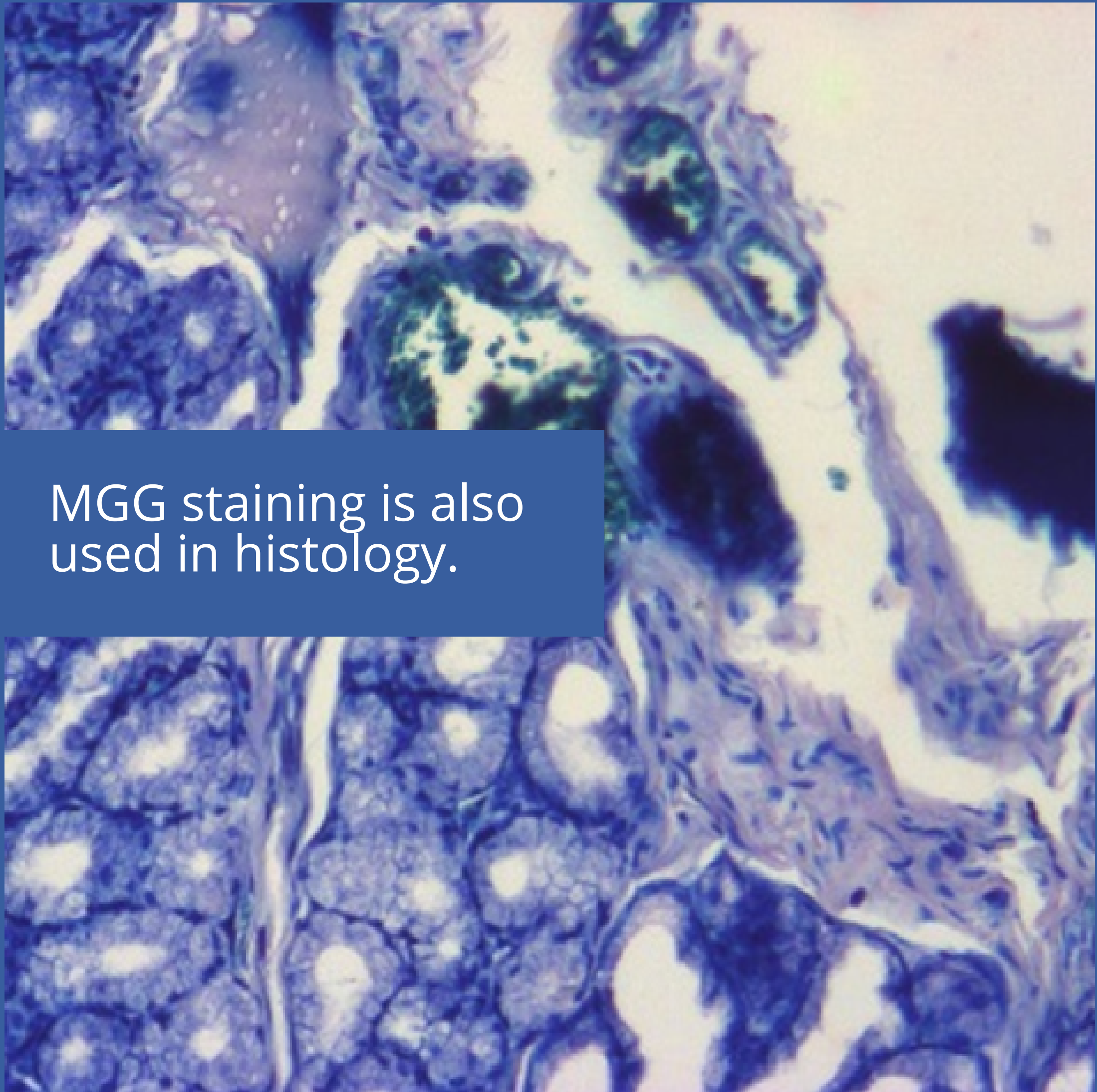


CellaVision DC-1 photo of a blood smear stained with RAL MGG.



**DID YOU KNOW?**

Photo of a histology slide with a section of stomach stained with RAL MGG.



MGG staining is also used in histology.

Did you like this post?  
Feel free to comment  
or share the post

