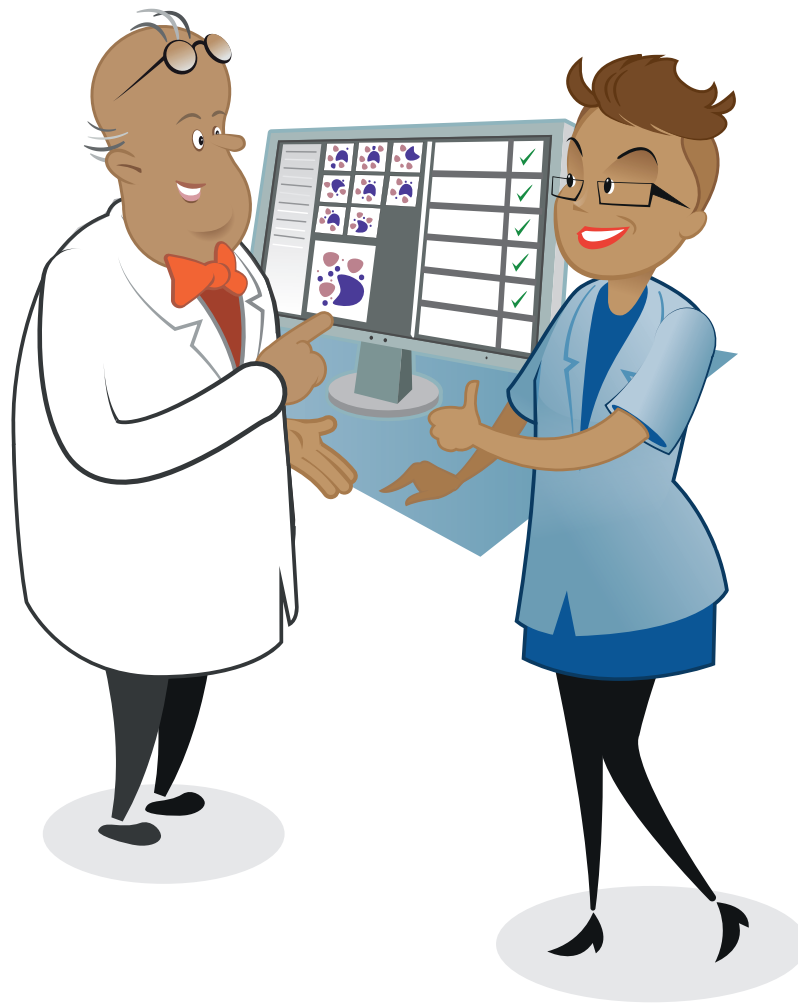


Meanwhile in the world of morphology ...



## Work. Together.

The continuous update of knowledge and skills are important demands on laboratory technologists today. High retirement rates together with advancements in science and technology are driving the need to train and re-train staff in the laboratory. As a consequence reliance on advice or assistance from colleagues is greater than ever before. At the same time the limitations of training or working together with standard analogue microscopes are obvious. *How do you make sure that you and your colleague are assessing the same blood cell as you take turns behind the microscope?*

In the world of digital morphology on the other hand, co-working and joint assessments are made easy. The cell images are displayed on the computer screen and you can point to them, discuss, make the final assessment and be certain you are talking about the exact same cells. This is what happened today, when Digi drew on Mike's years of experience as they worked together on a particularly challenging assessment.

With CellaVision working together is no longer out of scope!

[READ MORE](#)

# CELLAVISION

[www.cellavision.com](http://www.cellavision.com)

Look out for the next issue in mid-June.