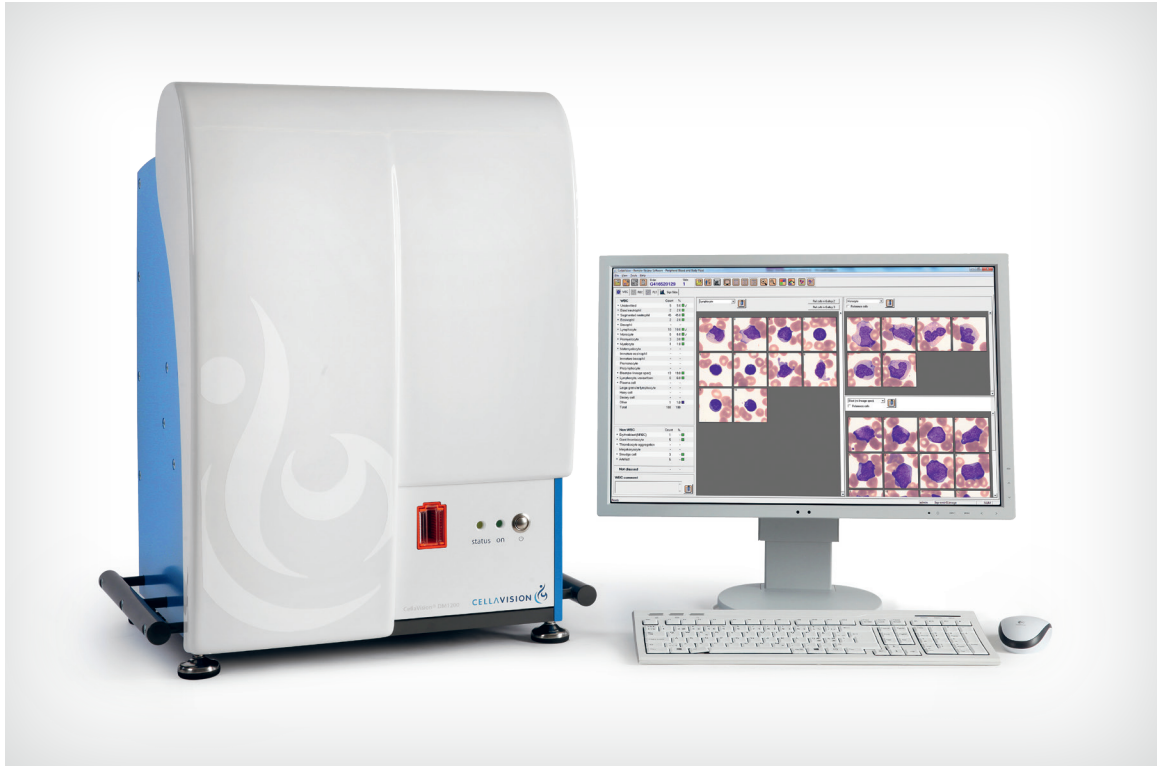


Digital Cell Morphology by CellaVision

CellaVision® DM1200



The CellaVision DM1200 fills one of the remaining automation gaps in routine hematology testing. Designed to automate and simplify the process of performing blood and body fluid differentials, the system leverages high-speed robotics and digital imaging to automatically locate and capture high-quality images of cells.

- Loading Capacity: 12 slides
- Throughput: Approximately 20 slides / h*

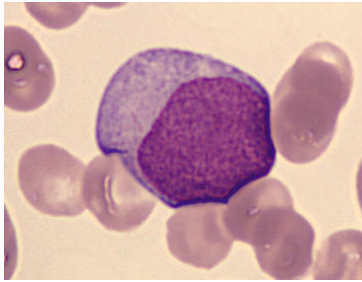
When implemented together with CellaVision applications and supporting software, the CellaVision DM1200 becomes the engine of a streamlined and automated digital cell morphology workflow, enabling laboratories to **work smarter** and **perform better**.

Digital Cell Morphology by CellaVision

CellaVision® DM1200

Why CellaVision DM1200?

Automates analysis of WBCs, RBCs and Body Fluids and is constructed on a proven technological platform that is reliable, easy to operate and requires minimal maintenance.



Best-in-class image quality



Reliable automation



Compact bench-top design

Features:

- Automatically captures digital images of cells from blood smears and body fluid preparations
- Loading capacity of 12 slides
- Approximately 20 slides throughput per hour*
- Creates digital scan of pre-defined area of any interesting specimen

FOR A MORE DETAILED PRESENTATION, PLEASE VISIT WWW.CELLAVISION.COM/PRODUCTS

TECHNICAL SPECIFICATIONS:

SLIDE HANDLING

- Requires barcode labeled slides with clipped/round corners
- Slides are loaded into a magazine with the capacity of 12 slides
- Analyzes slides with blood smears and body fluids either batched in dedicated magazines or mixed when interfaced to a LIS

IMMERSION OIL

- Automatic dispensing
- Easy replacement of oil pack

QUALITY CONTROL

- Cell location accuracy test for the verification of the hardware and stain quality

ARCHIVING OF RESULTS AND IMAGES

- Supported media: CD-R/CD-RW and LAN

STORAGE CAPACITY

- Primary storage: On local hard drive up to 4,000 slides (20 GB)
- Secondary storage: Unlimited when transferred to external storage media

PRINTER SUPPORT

- Laser/inkjet printers supported by Windows

COMMUNICATIONS

- Bi-directional LIS support, ASTM
- Ethernet 10/100 Mbps
- Multiple CellaVision DM analyzers can share a database
- E-mail

SYSTEM COMPONENTS

- Slide Scanning Unit
- CellaVision DM Software
- System Computer with Windows

ELECTRONICAL SPECIFICATIONS

- Voltage input: 100 to 240 VAC
- Current input:
- System computer: 1.4 to 0.7 A
- Slide scanning unit: 0.6 to 0.3 A

CLEARANCE

- CE, 510(k)

SIZE (W X D X H)

- 576 x 450 x 710 mm • 22.7 x 17.7 x 28.0 inches

WEIGHT

- 80 kg/176 lbs

THROUGHPUT*

Peripheral Blood:

- Up to 20 slides/h for complete differential (100 WBC+RBC+PLT)

Digital Slides:

- Up to 20 slides/h for 10 x 10 mm in 10x
- Up to 1.5 slides/h for 10 x 10 mm in 10x + 50x
- Body Fluids (based on 6 mm sample area):
- Up to 15 slides/h for differential (100 WBCs + 10x)
- Up to 3 slides/h for differential (100 WBCs + 10x + 50x)

OPTIONAL SOFTWARE / APPLICATIONS

- CellaVision® Advanced RBC Application
- CellaVision® Body Fluid Application
- CellaVision® Remote Review Software
- CellaVision® Proficiency Software

ACCESSORIES

- CellaVision Immersion Oil Pack • Barcode labeled slide magazines • QC barcode labels
- Light tower • Label printer kit

Specifications are subject to change without notice.

This product may not be available in all markets.

**Processing time may vary depending on smear quality,*

WBC concentration and number of non-WBCs.

MM-050-01 2015/04/01

CELLAVISION 